
JUNE 2023

WINTER 2023 NEWSLETTER



Quarterly Newsletter for Members

From the Editor

Hello all members (and maybe those thinking of joining our friendly club).



The Photography exhibition held as part of the Easter Art Expo held by the Bellarine North Rotary Club was a great success. Members and visitors had a chance to peruse a fine collection of prints and discuss the merits of photography as art. A number of member's prints were sold. Rotary were very happy with the involvement of our club in their signature art event.

A new exhibition "Australia's Antarctic" at Focal Point Gallery includes images by one of our club members, Chas Taylor. You will find a detailed explanation on the last page of this newsletter as well as the gallery opening dates and times.

IN THIS ISSUE

A message from our president

Committee News

Member news

About our Club

Events - Past and Future

Neil Smith has written an easy to understand guide for printing images. So many tips and a great help to those of us who never seem to get prints just right.

The club AGM will be held on Monday 7th August. Please give thought to nominating for a committee position. It is fun and you get to have a say in how the club is run.

Sheridan La Peyre has offered to prepare and edit our club newsletter for a while. I am very happy to hand this important job over and I know Sheridan will do a great job. As always, members contributions to the newsletter are very welcome.

Thanks and happy reading.

Robyn Curtis

All images in this newsletter are subject to copyright by the owner and may not be copied without permission

A Message from our President

As winter is upon us, it is a time when we feel like staying indoors with a hot drink by the heater.

It can be a good time for photography with the presence of fog, rain, snow, and low clouds to filter the light. It is also time to go looking for fungi and chasing the milky way when the clouds permit. The sunsets and sunrises can be a lot richer in colors at this time of year and you don't have to get up too early to catch the sunrise. With the sun at a lower angle in the sky there are no harsh shadows.

Following our presentation by Mieke Boynton on abstract photography, this could be a chance to try some of the techniques she showed us.

There are some good Apps that can be helpful when planning an outing. Clear Outside or Cloud Cover are good for showing the amount of cloud in the sky. PhotoPills is excellent for planning shots. It shows where the sun rises and sets and the time, also where and at what time the Milky way is in the sky. PhotoPills also has many features and there are YouTube videos on the many functions. Sky View is good for showing the stars and constellations.

As we are getting closer to the AGM, I would like to encourage members to consider being on the committee. We need to find a new President, as I will be stepping down after 10 years on committee. We will also need 2 general committee members. Our club needs a committee to continue functioning. With everyone sharing the work it is not too difficult. Please consider how you can be involved.

Lynne Bryant
President.

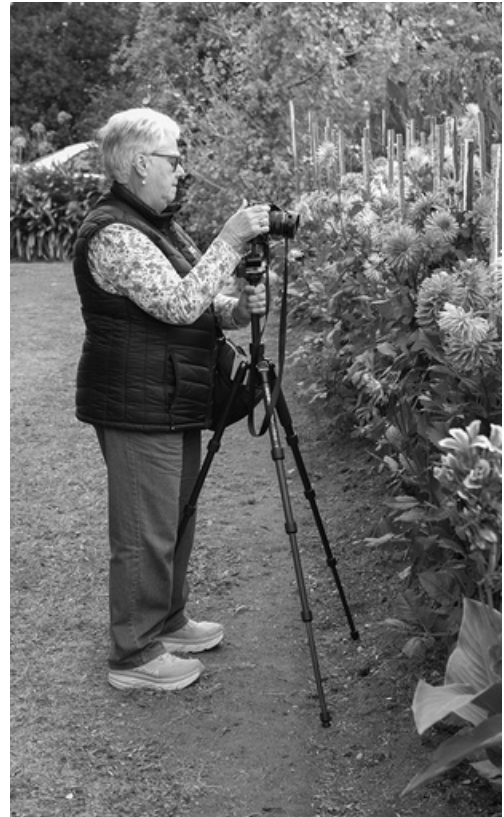
Thank You - Lynne and Vikki

President of our club, Lynne Bryant and Treasurer, Vikki Gage are stepping down from their committee roles after many years of service to our club.

Lynne Bryant joined Bellarine Camera Club in December 2011. She nominated as the club Secretary in 2014 and after three years in that role she became President of the club in 2017.

Lynne has been a strong advocate for the club and has mentored new committee members as well as being a strong voice for club development. She led the club through the difficult times of the recent pandemic, implementing zoom meetings and working out ways for members to stay connected. Lynne has done so much work behind the scenes to ensure the club has speakers and judges as well as the smooth running of the hired premises.

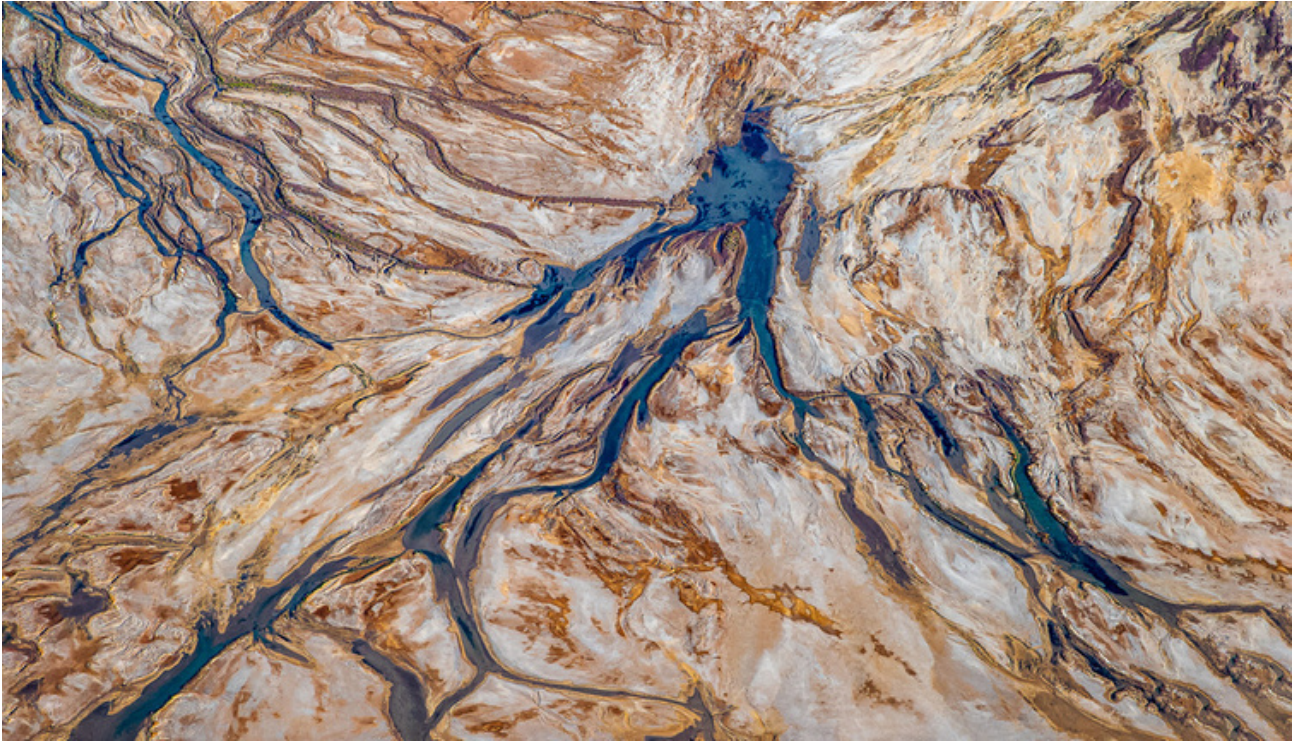
Oh behalf of all present and past club members I would like to thank Lynne for the huge amount of work she has undertaken to keep the club running. I hope Lynne now has time to relax and work on her photography and enjoy some travel.



Vikki Gage joined Bellarine Camera Club in April 2013. She nominated as Membership Officer in 2014 and was elected Treasurer in 2015. Vikki is the friendly person who assists us all when we join the club, makes sure fees are paid each year, keeps the membership records and looks after the club financial matters. On behalf of the club I would like to thank Vikki for looking after all new members for so many years and for keeping track of club finances, paying the bills and doing all the many tasks that keep the club ticking along. I hope Vikki has a bit more time for herself and maybe rekindle her photography interests.



The story behind the image



Branching Out © Suzanne Fatchen

Branching Out was taken on a Tom Putt workshop over Lake Eyre- Kati Thanda. During the workshop we went on 4 or 5 flights over the most impressive inland lake in Australia.

Kati-Thanda is 144 km by 77 km and can be found in South Australia. It is Australia's largest salt lake and was formed 200 million years ago. It is the lowest point below sea level on the Australian Continent.

Fun fact it has it's own yacht club. <https://www.lakeeyreyc.com/>

We were based at William's Creek and flew out over the lake to capture many amazing shots.

Doors off Cessna flying with some very trustworthy but oh so young pilots. It was truly an amazing experience.

Tech details of the shot: Canon 5 D Mk iv, 24 to 10mm lens at 93mm, ISO 160, f5.6 SS 1/750.

Suzanne Fatchen

-
- ***Your first 10,000 photographs are your worst.”***
– **Henri Cartier-Bresson**
 - ***“Photography is an austere and blazing poetry of the real.”***
– **Ansel Adams**
 - ***“Photography is the story I fail to put into words.”***
– **Destin Sparks**

About Bellarine Camera Club

Bellarine Camera Club offers members a chance to learn, grow and share ideas with other like minded photographic enthusiasts.

The Club meets on the first and third Monday of each month at 7.30pm at Springdale Neighbourhood Centre, 17-21 High Street Drysdale.

The syllabus of all competitions and events is on the club website and is updated regularly with new information. Please refer to the syllabus for information about competitions and club events.

<https://bellarinecameraclub.org.au/>

Bellarine Camera Club Committee

- President Lynne Bryant
- Vice President Robyn Curtis
- Secretary Suzanne Fatchen
- Treasurer Vikki Gage
- Vice President Robyn Curtis (Publicity)

General Committee

- Geoff Evans (Competition Secretary)
- Stan Coath (Outings)
- Helen Brooks (Library)
- Debbie Hallows
- Jenny Warren
- Andrew Leece (Syllabus)
- Colin Burrett



CLUB APPAREL

A wide range of Club Apparel is available to order On-line.

With the club logo embroidered on a range of clothes, hats, bags in a variety of colors members can order items online. The link to the web page is <https://promote-it.com.au/bellarinecc>

Future Events

- Interclub Competition with Corio Bay, Colac and Bellarine Camera Club
- VAPS Convention at Colac 16th to 18th June
- Winter Solstice event at Queenscliff on 24th June
- Bellarine Camera Club Annual General Meeting on 7th August at Springdale hall, 7.30
- Look out for opportunities to try some Astrophotography over winter with the Geelong Astronomical Society

Past Events

- A great presentation by Mieke Boynton via Zoom. Mieke demonstrated some great ideas and techniques for abstract photography and showed some of her award winning aerial images.
- Club Outing to Roraima nursery. Members enjoyed photographing a huge collection of exotic succulents and interesting architectural plants.
- Our club had a presence at Focal Point Gallery camera market and our members enjoyed connecting with Geelong and Corio Bay club members.
- A thought provoking presentation by Kelly Clitheroe, Secretary of the Geelong Astronomical Society. Kelly is a passionate photographer and gave a fascinating presentation on Astro Photography.

MAKING BETTER IMAGES AND PRINTS - By Neil Smith

Printing your own work can be very rewarding but frustrating too. Here are a few suggestions for those who print their own work or get a printhouse to make prints for them. Also, those who only present their work digitally may get some ideas also.

1. Use the same colour space from start to end – from your camera to the printer. Either sRGB or Adobe1998RGB. Set your camera and PhotoShop to your preferred colour space. (Don't worry about setting it in LightRoom as it uses ProPhotoRGB by default). If you have a wide gamut monitor use Adobe1998.
 2. If your wide gamut monitor has hardware calibration ensure that you regularly calibrate it. A poorly calibrated monitor (or one that cannot be properly calibrated) is usually the source of most editing problems.
 3. If you cannot calibrate your monitor properly there are ways to work around this issue.
 4. Do not edit your images in a bright (or dark area). A lower level of ambient light, without light directly on your monitor is important. A simple hood to shade your monitor is a good idea.
 5. One of the vital rules to follow when editing images is from the darkroom days – correctly setting the black and white points. This involved doing test prints in years gone by – but it is very easy to do this LightRoom today. Firstly, set the brightness of the midtones with the Exposure slider, and then adjust the Black and White sliders while watching the histogram. Then make your other edits.
 6. Do not be afraid to push the brightness (exposure) up a little for prints, as prints generally appear darker than your monitor does.
 7. Soft Proofing (simulating a print on your correctly calibrated monitor) is also a good idea, especially if you use a range of papers to print your images, or you use a printhouse. Both LightRoom and PhotoShop offer this facility before printing. This will help to identify issues of excessive brightness, darkness and saturation etc. with your images – before you print.
 8. Finally, when exporting your images, for printing by a printhouse or digital display, make sure that you attach the correct colour space to the image – usually Adobe1998 or sRGB.
-

AUSTRALIA'S ANTARCTICA

About the exhibition

This photographic exhibition celebrates Australia's involvement in the Antarctic, from 1912 to the present day.

Douglas Mawson had been on Ernest Shackleton's Nimrod expedition (1907-1909), but he wanted a truly Australian expedition dedicated to scientific research rather than purely exploration or a race to the South Pole (reached by Norwegian Raold Amundsen in December 1911).

Mawson's Australasian Antarctic Expedition (AAE) is still regarded as the greatest scientific expedition ever to sail to the Antarctic. It covered the fields of oceanography, meteorology, terrestrial magnetism, geology and biology. Its complete record of research filled numerous volumes that took over 30 years to publish completely. Its eight major sledging parties covered more than 4,100km, while the SY Aurora sailed more than 2,900km along the coast, mapping the continental shelf through 55° of longitude. Sadly, it also suffered tragedy with the deaths of its tow dog-handlers Belgrave Ninnis and Xavier Mertz, and almost in the death of Mawson himself.

Frank Hurley was the official photographer and his work in Antarctica is a remarkable achievement, being shot under extreme conditions, with primitive equipment and equally primitive means of measuring the amount of light for exposing the glass photographic plates and early roll films. He also shot a considerable amount of movie film, which formed the basis of his film *Home Of The Blizzard*, released in 1913.

Mawson led a second expedition to Antarctica in 1929-'31, the British Australian and New Zealand Antarctic Research Expedition (BANZARE), with funding from all three governments. On this expedition he claimed numerous parts of Antarctica in the name of the British Empire, which were transferred to Australian control in 1933. Frank Hurley was again the official photographer on this expedition.

BANZARE resulted in the establishment of the Australian Antarctic Territory in 1936. Throughout the 1930s and 1940s Mawson lobbied the Australian Government to establish a permanent presence in the Antarctic, which led to the formation of the Australian Antarctic Division and the first Australian National Antarctic Research Expedition (ANARE) to Heard Island in 1947, and subsequently to the establishment of three permanent bases on the Antarctic Continent.

Alan Campbell-Drury was radio operator and second photographer on the first ANARE and shortly afterwards became head of the AAD's photographic section for about 30 years. Alan made numerous long- and short-term trips to the Antarctic, and we are pleased to include many of his photographs, thanks to the generosity of his family.

Although work from other photographers is included in the exhibition, the third major collection is from Charles (Chas) Taylor, who worked as a radio technician at Casey Station in 1983.



Frank Hurley sits among Adelie Penguins in Antarctica, c1912, with a Graflex stereographic camera. A small number of Hurley's stereo photos form part of The Hurley Collection, held by the National Library of Australia in Canberra. (Photographer unknown).

Australia still maintains these bases, Casey (near its predecessor, Wilkes), Davis and Mawson Stations, although the term ANARE is no longer officially used. Important geological, meteorological and climate research work continues at these and many other international bases across the continent.

Today, Antarctic tourism is increasing in popularity, as members of the public are able to experience some of the sights and conditions of Antarctica, while enjoying luxuries polar explorers of old could never have imagined. International treaties are keeping tourist numbers down, but small and exclusive tours offer photographers opportunities to photograph spectacular scenery and wildlife not seen anywhere else in the world.

Our final selections of photos, illustrating the extent of Antarctic tourism, come from Lothar Huber and Peter Eastway.

This exhibition gives a glimpse into to the lives of some of the men from the "Heroic Age of Antarctic Exploration", the increasingly mechanised and modernised Antarctic research since the Second World War, and the changing face of global tourism.



Alan Campbell-Drury



Chas Taylor



Lothar Huber



Peter Eastway

This exhibition has been produced with the support of :

ILFORD

FOCAL POINT
Studio, Darkroom & Gallery

**Better
Photography**
magazine

AUSTRALIA'S ANTARCTICA

Photographic Exhibition



Christmas in Antarctica, 1912. Photographer unknown.

Sledge dog, 1963. Photo: Alan Campbell-Drury

3 JUNE TO 30 JULY 2023

Friday to Sunday 10am to 5pm

Monday to Thursday by Appointment

At Focal Point Gallery, 46 Douro St, Nth Geelong

\$10 adult \$8 Concession

Under15, Disability carers & Focal Point members FREE

Proudly supported by:

ILFORD

FOCAL POINT
Studio, Darkroom & Gallery

**Better
Photography**
magazine

 **camera&photo**

Michael Fitzgerald
Director

44 Ormond Road
East Geelong VIC 3219

03 5222 2953
contact@44framefactory.com.au
www.44framefactory.com.au

FRAME FACTORY
Art Materials



FRAME FACTORY
Art Materials



AETERNALAB
ARCHIVAL PRINTING

44 Frame Factory - 44 Ormond Road, East Geelong
for Mat Boards, Framing and Art Supplies
10% discount to club members on printing and mat boarding