

NEWSLETTER

BELLARINE CAMERA CLUB • ISSUE 031 • SUMMER 2015



INSIDE ...

Image of the Year Winners

Open and Abstract Competition Results

Two local Photography Competitions to enter

My Antarctic Dream Part One By Lynne Bryant



FRONT PAGE
by Lynne Bryant

Bellarine Camera Club Inc.
Member of VAPS

MEETING VENUE
SpringDale Neighbourhood Centre
17-21 High Street, Drysdale

CONTACT
Email info@bellarinecameraclub.org.au
Website www.bellarinecameraclub.org.au

COMMITTEE

President	Shane Coles
Vice President	Gordon Traill
Secretary	Lynne Bryant
Treasurer	Vikki Gage
Committee Members	Jon Bagge
	Darren Henry
	John Gallichan
	Greg Wane

Competition Secretary	Val Moss
Membership Secretary	Vikki Gage

MEETINGS

Twice a month (excluding January):
1st Monday - Club Night
3rd Monday - Judging Night

NEWSLETTER

Editor - Jon Bagge
Distributed to members via email;
also available on website.
Newsletter items to the editor (preferably in Word
format)
Images welcome - please submit via email in jpg
format as per competition sizing
Articles to be received by the 20th of the month
Submissions to: editor@bellarinecameraclub.org.au

Images © by image makers.
All contents in this issue are for
information purposes only.



Above: Committee member Gordon Traill receiving the COGG Grant that will support the clubs activities in 2016 by providing two photographic workshops and helping with our Annual Exhibition

The Committee of the
Bellarine Camera Club
would like to wish all our members
a wonderful Christmas
and a very successful 2016



Calling all members.....

Members are invited to submit their best images for publication consideration in next month's newsletter.

For front cover & back cover consideration, portrait orientation images of any subject would be appreciated - images do not need to have been entered into a competition (size to be at least 1.5mb for cover portrait images).

This newsletter will only ever be as good as the contributions. We encourage all members to submit images, stories behind the images, great locations and tips for the newsletter.

See side panel on this page for submission details and 'date by'.

President's Report

Shane Coles



PRESIDENTS REPORT DECEMBER 2015

Well 2015 has finally come to a close. An outstanding year for the club with some magnificent work submitted, displayed and sold by club members.

A big congratulations to our Image of The Year winner Nick Randall and our Aggregate winner John Gallichan. There is a challenge out there for all of us in the next 12 months to knock these two off the winners podium.

The year has seen some inroads into the club expanding into a more professional unit. The council grant for 2016 should continue to help the club move ahead, but we must all remember the sole aim of our little unit is to promote photography, enjoy each others work and the most important, socialise.

Once again I would like to thank my committee for the work they have done over the past 12 months. If it wasn't for them we would not function as a club.

I urge all members to continue taking photos and strive for that perfect image.

I hope you all have a great Christmas and a Happy New Year where ever you may be. Me I will be looking into the sunset on a little Mexican beach under an umbrella enjoying a 90 cent Corona. Life is hard, but someone has got to do it. Viva Mexico.....

I have added an image from my past Mexican visit. Enjoying the local pests.

Quote of the month:-

Christmas is cancelled! I told Santa that you were good this year and he died laughing.

Best wishes

Shane Coles

Club President

October Competition - Open

*Prints
A Grade*

1st & Image of the Competition



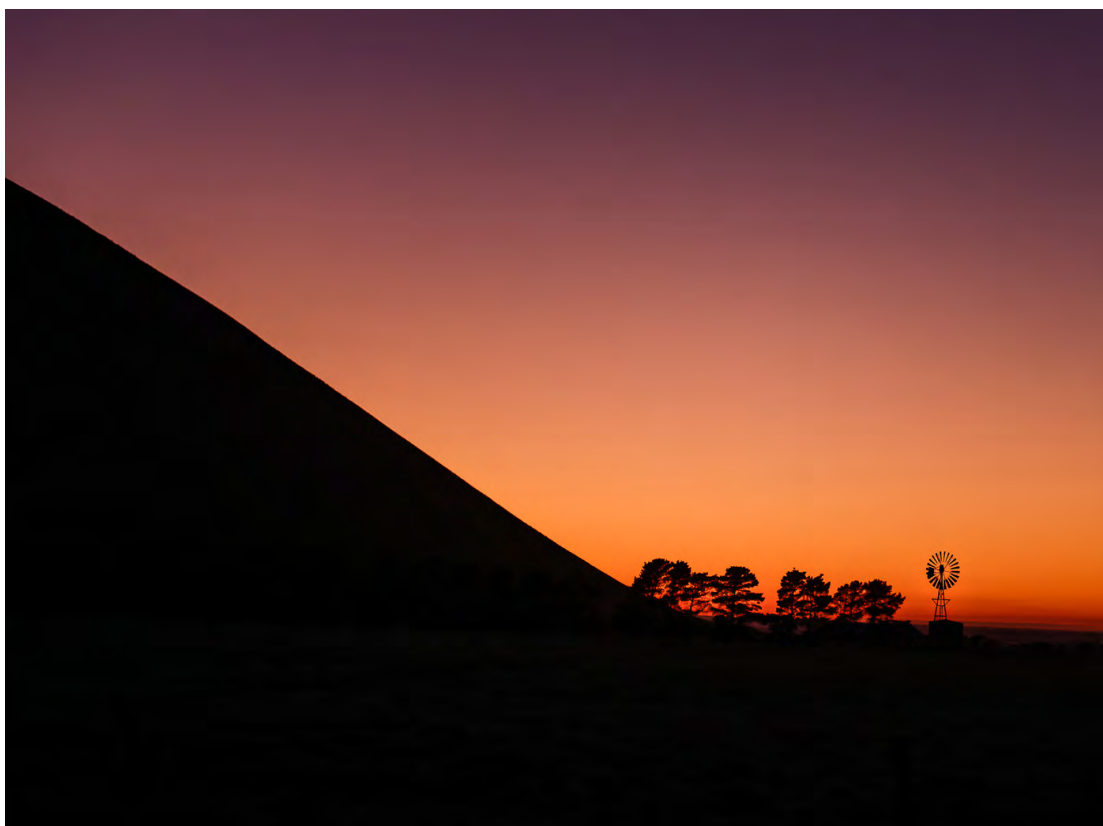
*Hope
by Nick Randall*

October Competition - Open

Prints

A Grade

2nd



Mt Elephant
Nick Randall

3rd



Robbie
Gordon Traill

October Competition - Open

*EDIs
A Grade*

1st



*Gliding Pelican
Greg Wane*

2nd



*Seaweed
Bill McCall*

October Competition - Open

*EDIs
A Grade*

=3rd



*The Encounter
Nick Randall*

=3rd



*Charlotte
Tony Cavanagh*

October Competition - Open

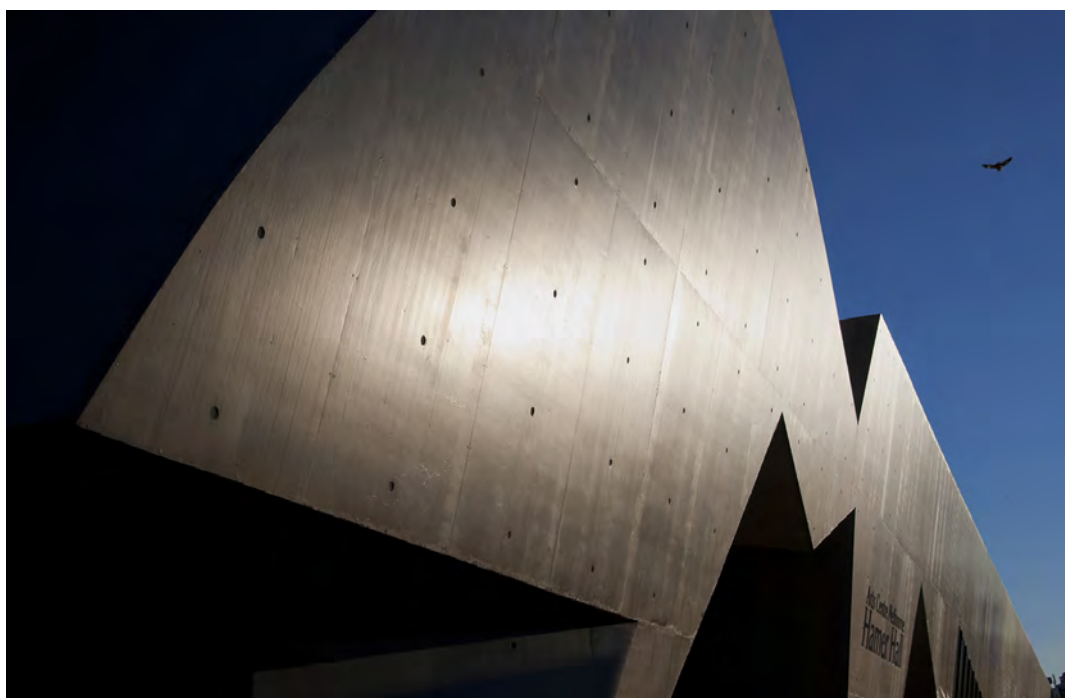
EDIs

B Grade



Fire on the water
Daryl Haywood

2nd



Hamer Hall
Daryl Haywood

October Competition - Open

EDIs

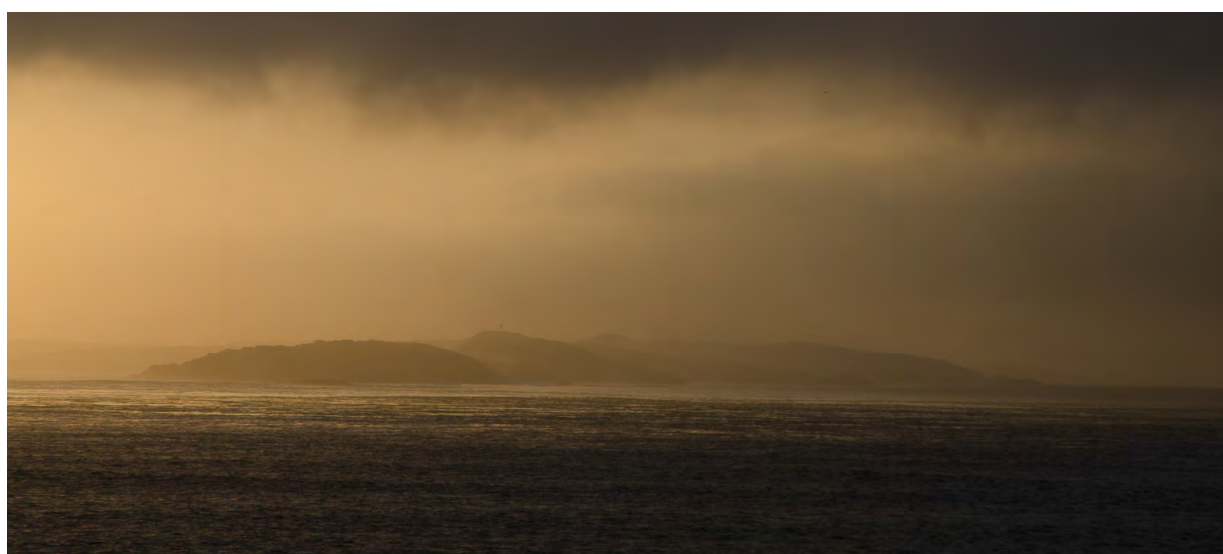
B Grade

=3rd



Stormy Lighthouse
Phil Blewitt

=3rd



Point Nepean
Phil Blewitt

October Competition - Open

*Prints
B Grade*

1st



*Gilded Dawn
Carole O'Neill*

2nd

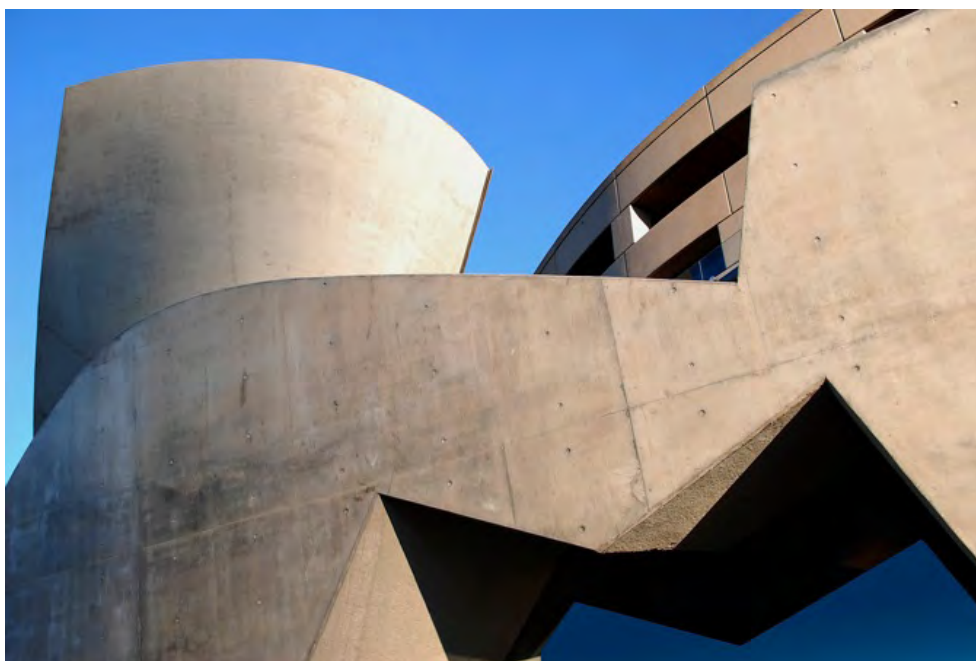


*Morning Glory
Carole O'Neill*

October Competition - Open

*Prints
B Grade*

3rd



*Curvaceous Concrete
Daryl Haywood*

October Competition - Open

Merits



Strawberry Squash
Bill McCall

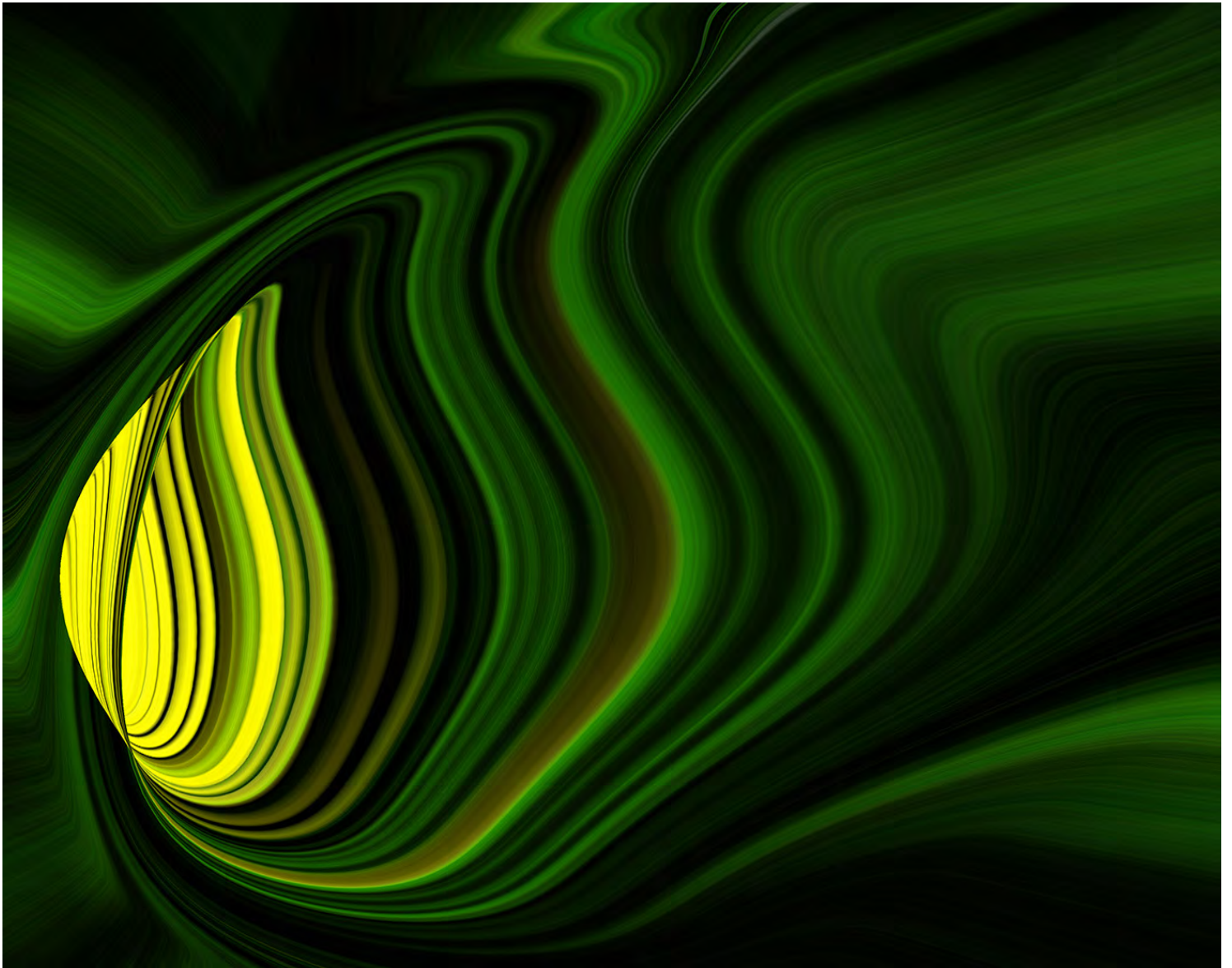


Hells Gate Lighthouse
Colin Whitehand

November Competition - Abstract

*EDIs
B Grade*

1st & Image of the Competition

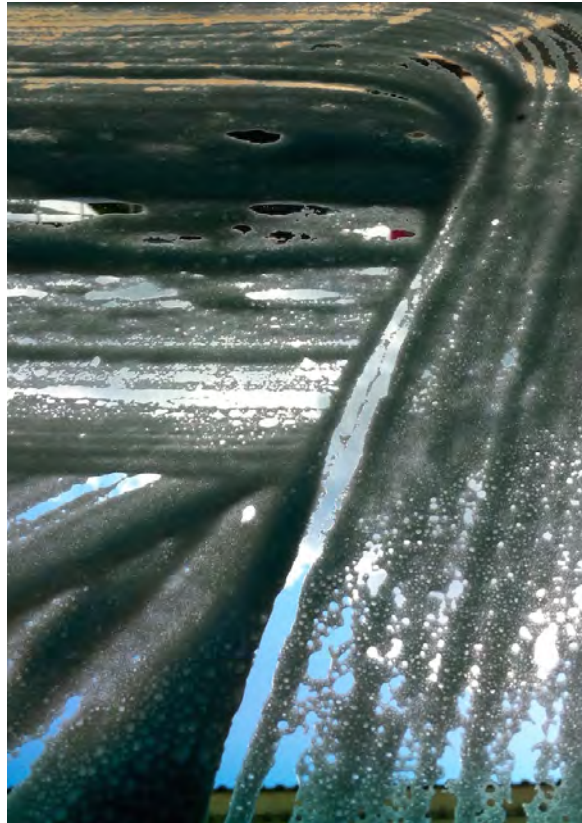


*Claudia Welter
Psychedelic*

November Competition - Abstract

*EDIs
B Grade*

2nd



*New Start
Carole O'Neill*

=3rd

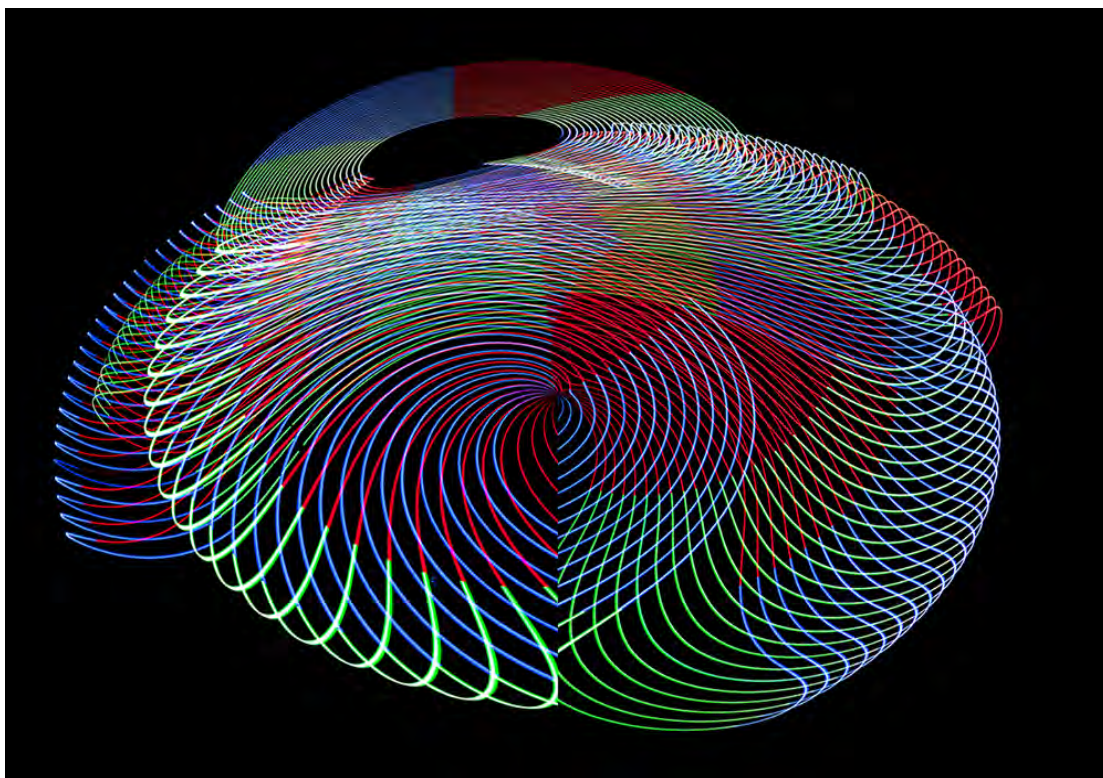


*Eric Welter
Machine*

November Competition - Abstract

*EDIs
B Grade*

=3rd

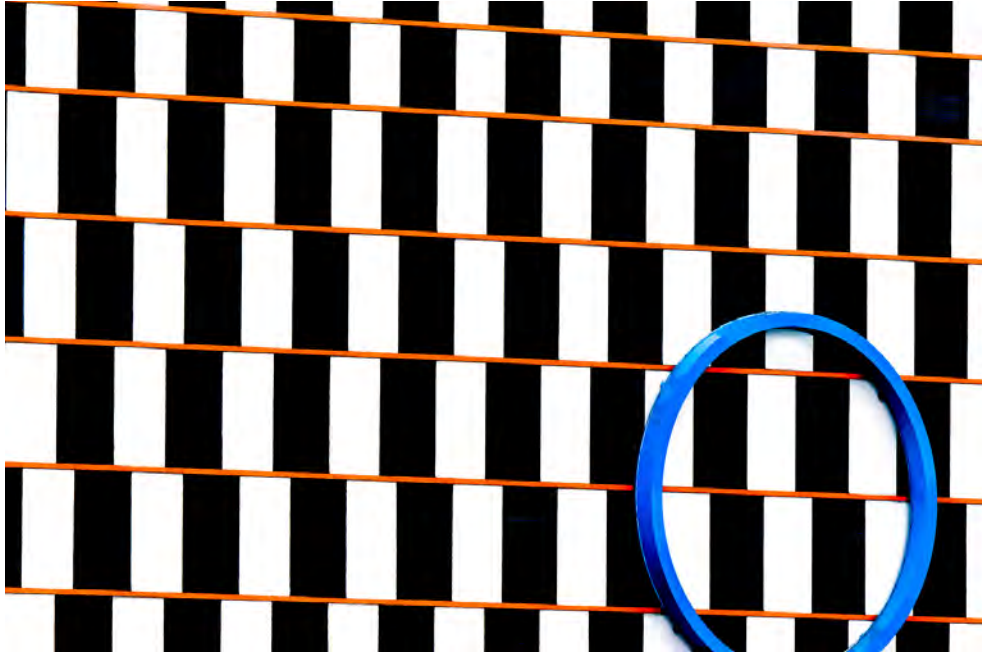


*Homemade Pixelstick
Eric Welter*

November Competition - Abstract

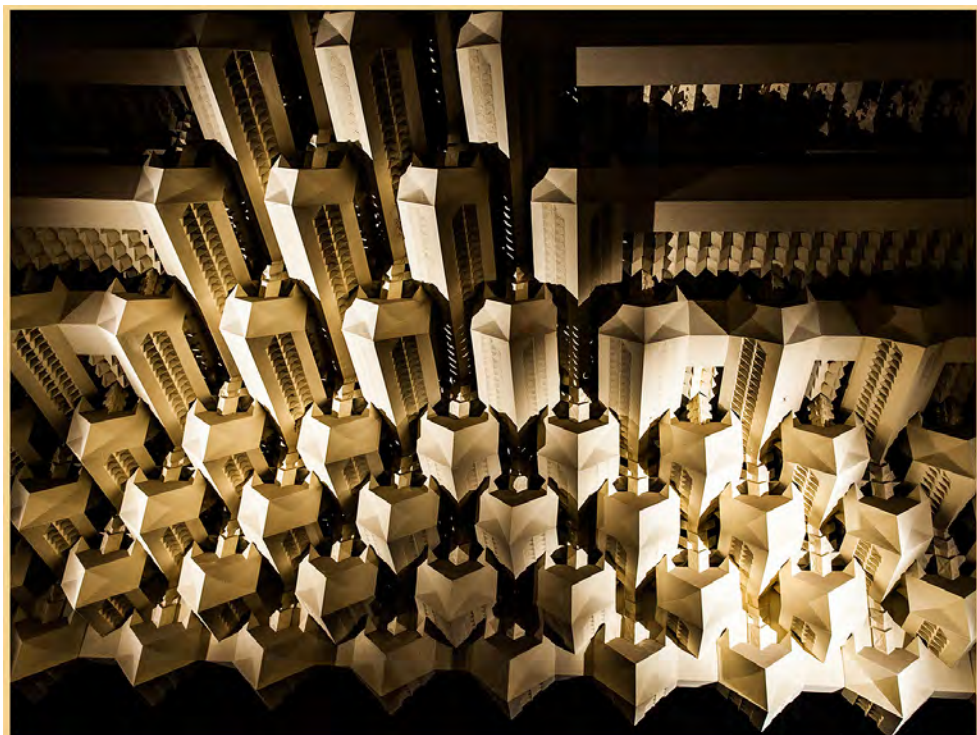
*EDIs
A Grade*

1st



*OrangeVibe
Nick Randall*

=2nd



*Capitol Ceiling
Val Moss*

November Competition - Abstract

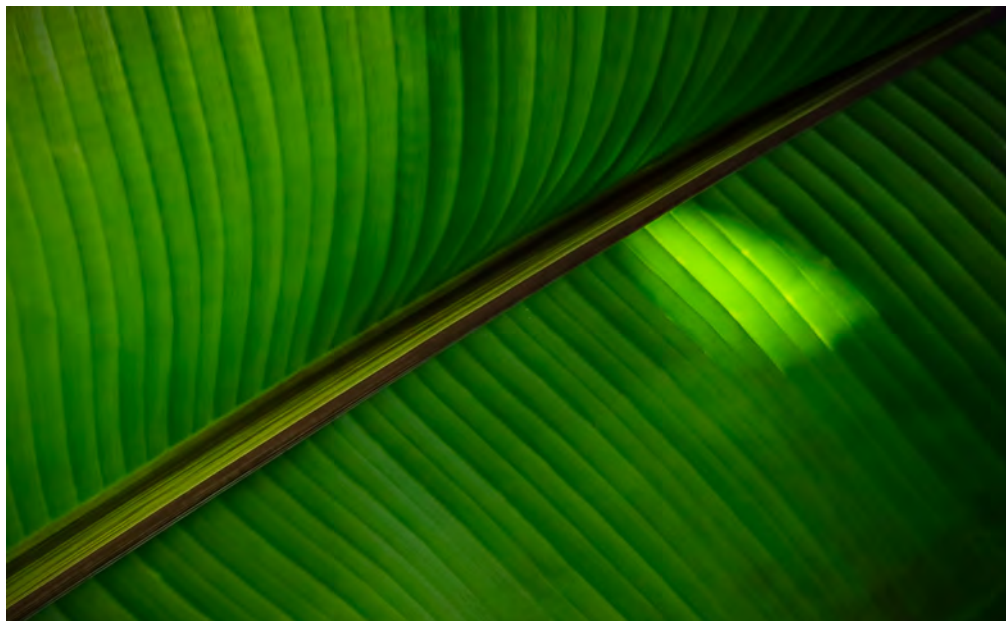
*EDIs
A Grade*

=2nd



*Smoke
Bill McCall*

3rd



*Spotlight
Martin Young*

November Competition - Abstract

*Prints
B Grade*

1st



*Joyride
Daryl Haywood*

2nd



*At Speed
Daryl Haywood*

November Competition - Abstract

*A Grade
Prints*

1st



*Zig
Nick Randall*

=2nd



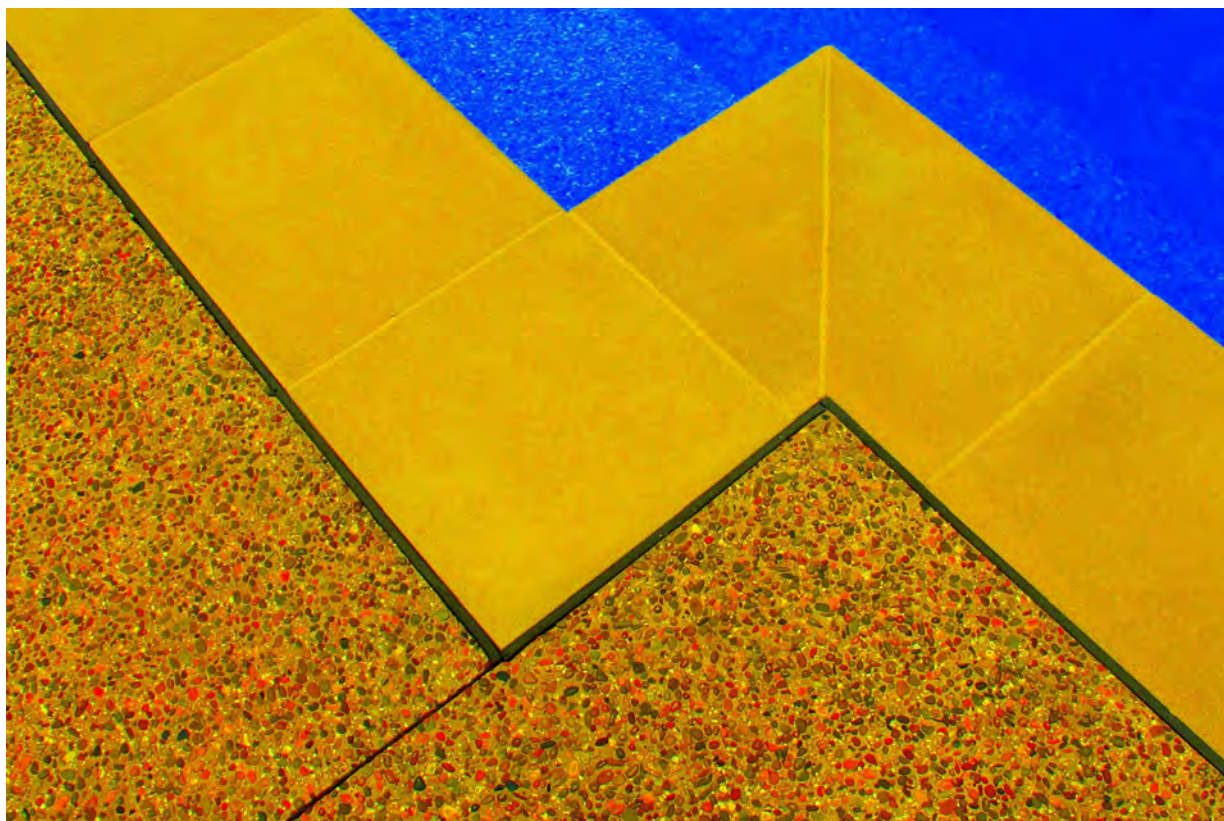
Blue Dreams
Nick Randall

=2nd

Image Unavailable

Autumn Leaves
Bill McCall

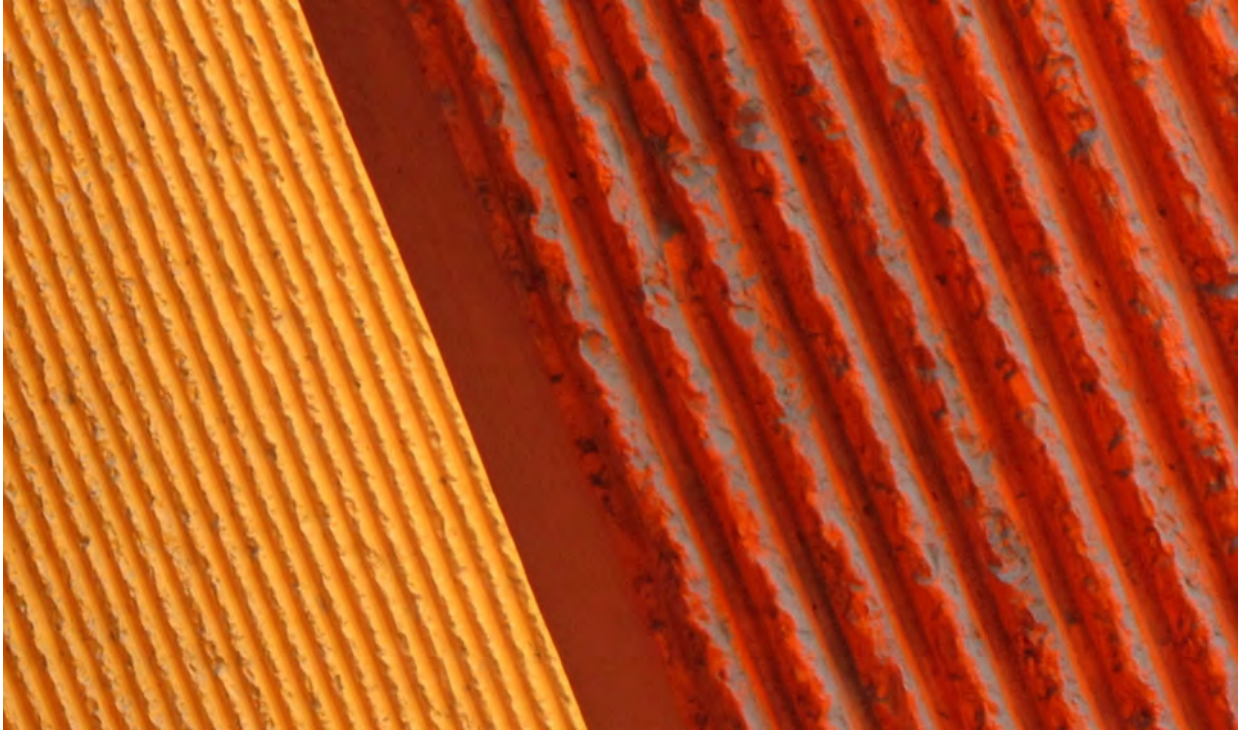
3rd



Poolside
John Gallichan

November Competition - Abstract

Merit



Docklands
John Gallichan



Plates of Colour
Tony Cavanagh



**national
wool
museum**



Geelong by Nature Photography Competition

The National Wool Museum (NWM) invites you to 'put nature in the frame' and show us life through your lens. Photographers of all ages and abilities are welcome to submit an original photograph showcasing our local wildlife.

All submissions will be part of the National Wool Museum's on-line social media gallery. All entries will be uploaded to a rotating slide-show at the National Wool Museum on show from 29 January through to the end of the exhibition 15 May 2016.

They will also be uploaded to the National Wool Museum's Flickr account. Winning photographs will be showcased in two ways:

During opening hours in the NWM they will be reproduced for display in the Cabinet of Curiosities lounge of the National Wool Museum outside the Wildlife Photographer of the Year 2015 exhibition

During evening hours the images will be projected through the Moorabool Street entrance window(s) – directly across from the footpath bench.

Winners and a highly commended will be chosen in 2 categories:

Open & Young Photographer - under 17 years old

Prize winners will receive a framed copy of their photograph and a certificate signed by the Geelong Mayor Darryn Lyons.

Geelong by Nature selected images will be exhibited until the end of Wildlife Photographer of the Year 2015 exhibition 15 May 2016.

Now in its 51st year, the Wildlife Photographer of the Year competition and exhibition provides a global showcase of the world's very best nature photography.

Wildlife Photographer of the Year is developed and produced by the Natural History Museum, London.

How to enter

Email your entry to: nwminfo@geelongcity.vic.gov.au

Your entry must include:

Your full name, email address, postal address and contact number.

One high quality digital image, between 1-2MB, as a JPEG or TIFF file.

Key dates

Entries open: 27 November 2015

Entries close: 22 January 2016

Winner announced: At launch event 28 January 2016

Wildlife Photographer of the Year 2015/Geelong by Nature Exhibition opens: 29 January 2016

Full details See: <http://www.geelongaustralia.com.au/nwm/news/item/8d1d2034e2090fb.aspx>



GABF BEERTOGRAPHY PHOTO COMPETITION 2016

1st Prize: \$1,000

Winning entry displayed at Little Creatures' Geelong Brewery

Who can enter the competition?

The GABF BEERtography Competition is open to amateur and professional photographers from anywhere in Australia.

What type of photograph can be entered?

It's up to you but it can't have any branding in the image. Think beyond a typical liquid beer image and ponder the wonderful world of beer and all that is behind this liquid nectar. The GABF BEERtography Competition is your chance to show us what craft beer means to you. It can be an image of beer, a person, brewing equipment or even the ingredients that go into making beer.

Remember, no branding of any kind is to be in the image, and the theme is "Craft Beer".

REGISTER NOW AT

<http://www.gabfgeelong.com.au/wp-content/uploads/2014/05/Beertography-Registration-2016.pdf>

– Entries close January 20th, 2016 –



Some 2014 Entries by Greg Forster, Craig Johnson, 2nd place getter Chelsea Teschner and winning photo "Bigger than all of us" by Susan Shanta)

My Antarctic Dream

-Part One-

by Lynne Bryant



My Antarctic Dream

-Part One-

by Lynne Bryant

On December 26th 2015, I started out on the trip of a lifetime. I flew from Melbourne via Auckland to Santiago, where I had to wait 5 hours for a connection to Buenos Aires. I stayed overnight in Buenos Aires before catching another flight to Ushuaia the next day. We stayed overnight in a hotel overlooking the Beagle channel and the town.



Early morning view of Beagle channel and Ushuaia from Hotel

The next morning we set off early for a tour of Tierra del Fuego, which is a national park about 15 km south west of Ushuaia and is part of the Andes Range. We visit a couple of lakes, pass by peat bogs which are remnants of old glaciers and because it is a lovely day (5 degrees) we get to walk along one of the walking tracks. The trees here are shallow rooted and blow over easily in the wind. They take a long time to decompose because of the cold.



We return to the town for some free time and lunch before boarding our ship later in the afternoon.

Ushuaia is situated on the Beagle Channel with Chile on the other side. Ushuaia was originally a penal settlement until 1947.

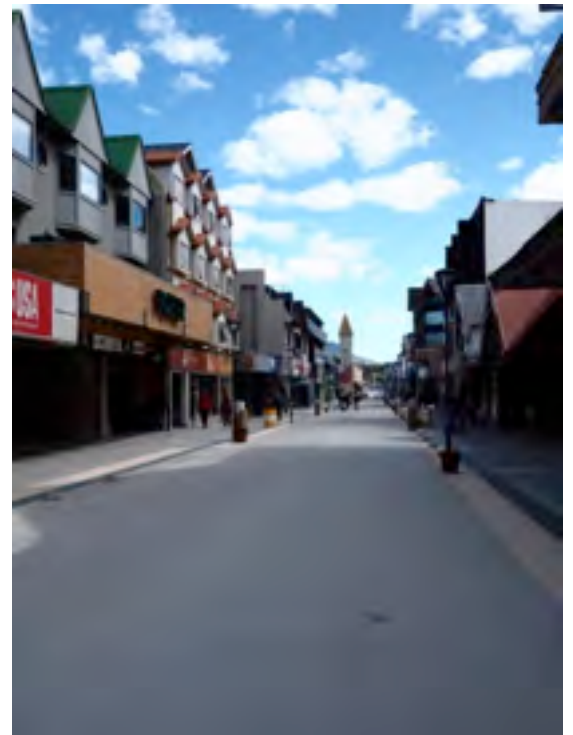
It has a population of 70,000 and most of the people work in tourism, government or industry. Life is expensive here as everything has to be brought in either by road or sea. Wages are high to encourage people to stay and they pay no taxes. Houses to rent or buy are very expensive.

In summer there is 17 hours of daylight and in winter there is only 7 hours. The temperature can get as low as -20 degrees C and it feels even colder with the wind chill factor.

Because of the cold climate people here need to take regular Vitamin D as even in summer they are covered fully.



Above: The snow-capped mountains surrounding behind Ushuaia. Right: Ushuaia main street



We set sail on December 28th sailing down the Beagle Channel and out to the Patagonian Shelf making our way towards the Falkland Islands.

The day at sea proved entertaining with all the sea birds flying in and around the ship. There were Black browed albatross, Wandering albatross, Light mantled albatross, Northern and Southern Giant petrels, Cape petrels, Prions, White chinned petrel, Great shearwaters and Wilson's Storm petrels. It was amazing to watch them on the thermals at the back of the ship. A number of hours were spent trying to photograph these birds, but it was very tricky.

We arrived at the Falklands on December 30th, where we visited West Point Island and Saunders Island. At West Point we are taken to an Albatross rookery. The caretaker of the island takes us over in a 4 wheel drive to Devil's Nose were the rookery, on the other side of the island. Here we see nesting albatross with their chicks as well as Rock Hopper penguins and their chicks



Black Browed Albatross and Chick



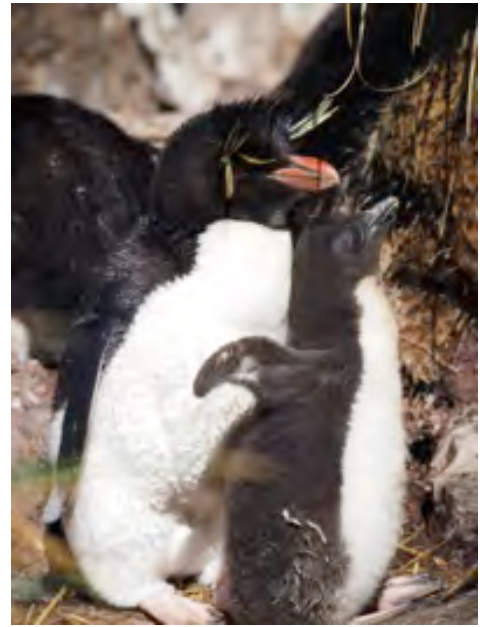
Below: Mating pair of black







Albatross colony at Devil's Nose



Rock Hopper penguin and chick

It's a 2.5 km walk back to the jetty from the colony and there are some wonderful views of the area to be had. On arrival back at the jetty the caretaker's wife has prepared morning tea for us. What a spread it was.



We head back to the ship for lunch and sail around to Saunders Island where we board the zodiacs again for our first beach landing. A beach landing is where you have to get out of the zodiac into the water and hopefully not get too wet. Here we get to see more Rock Hopper penguins, Gentoos, Kings and Magellanic penguins as well as Albatross, Kura Kuras and Kelp Gulls



King Penguins



Rock Hopper and chick



Magellanic Penguin



Gentoo Penguin

From Saunders Island we sail onto Stanley where we arrive the next morning and are taken by bus to the town. Stanley is the capital of the Falklands with a population of approx. 2500. It was first settled in the 1840's and was chosen for its sheltered harbour, abundant fresh water and peat for fuel. Stanley had a notorious reputation as a haven for vagabond sailors and grizzled whalers. In 1982 it was involved in a war with Argentina and remnants of that are still present on the island today. There are still land mines on the island from the Falklands war but the locals have refused to have them removed stating that there are other areas in the world worse off and that they know where they are and don't use that area.



Left: The Anglican Church with Whale bone arch

Above: An old wooden mast from the Great Britain 1843

After some time in the town we are taken out to Gypsy Cove, which is about 6 km trip to the northwest corner of Yorke Bay. Here there is a large population of Magellanic penguins as well as nesting shore birds. We're not allowed on the beach because of the land mines. On our way out to Gypsy Cove we pass the wreck of the Lady Elizabeth that was built in the late 1800's and was one of the first steel ships.



Gypsy Cove



Leaving the Falklands we spent the next 2 days at sea sailing the South Atlantic, the Convergence and Shag Rocks. Our days are filled with lectures from our very knowledgeable expedition crew members. We have a historian, geologist, ornithologist, a whale expert, and other members who have worked on South Georgia Island and McMurdoch base, all willing to share their knowledge of this wonderful environment.

Left: The Lady Elizabeth

End of Part One

*Bellarine Camera Clubs
Image of the Year*

*Prints
1st & Overall Winner*



*Mount Elephant
by Nick Randall*

Bellarine Camera Clubs Image of the Year

Prints - 2nd



*Honeyeater
by Greg Wane*

Bellarine Camera Clubs Image of the Year

Prints - 3rd



*Hope
by Nick Randall*

Bellarine Camera Clubs
Image of the Year
Prints
Merits



Tassie
by Greg Wane



Birds on a Wire
by Janet Young

Bellarine Camera Clubs Image of the Year

EDI's - 1st



*333 Collins
by Bill McCall*

October Competition - Open

EDI's - 2nd



*Eastern Yachts
by Jon Bagge*

Bellarine Camera Clubs Image of the Year

EDI's - 3rd



*Atrium Levels
by Greg Wane*

Bellarine Camera Clubs Image of the Year

*Prints
Merits*



*Red Square
by Val Moss*

Aggregate A Grade:

- 1 John Gallichan with 365.5 points
- 2 Bill McCall with 360.0 points
- 3 Martin Young with 350.0 points

Aggregate B Grade:

- 1 Daryl Haywood 161.5 points
- 2 Greg Wane 85.0 points (before moving to A Grade)
- 3 Liz Ryan 66.5 points



BELLARINE
CAMERA CLUB INC
www.bellarinecameraclub.org.au

BELLARINE CAMERA CLUB FEBRUARY-JUNE 2016 SYLLABUS

DATE	SUBJECT	IMAGES DUE for MONTHLY COMPETITION
------	---------	--

IMPORTANT

**For the latest syllabus information, competition rules, and image naming conventions
please refer to our website: bellarinecameraclub.org.au**

FEBRUARY 2016	OPEN February Comp submit EDI's by Feb 1 st and bring Prints along on the Night.	Images Due & FEB 1 for March Comp
FEB 1st	• Social Night – BBQ at hall 7 p.m. BYO, 3min AV or Prints to discuss	
FEB 15th	• MONTHLY COMPETITION – Open Self Judging	
FEB 29th	• COMMITTEE MEETING	
MARCH 2016	SET SUBJECT: NATURAL FRAME	Images Due MAR 21st for April Comp
MAR 7th	• Neil Hickman – bird photographer	
MAR 21st	• MONTHLY COMPETITION - Natural Frame Judge - TBC	
MAR 28th	• COMMITTEE MEETING	
APRIL 2016	SET SUBJECT: OPEN	Images Due APR18th for May Comp
APR 4th	• Peter Marin – Lighting - off camera flash, strobe lighting and more	
APR 18th	• MONTHLY COMPETITION – Open Judge – TBC	
APR 25th	• COMMITTEE MEETING	
MAY 2016	SET SUBJECT: BIRDS	Images Due MAY 16th for June Comp
MAY 2nd	• Workshop - to be advised	
MAY 16th	• MONTHLY COMPETITION – Birds Judge - TBC	
MAY 30th	• COMMITTEE MEETING	
JUNE 2016	SET SUBJECT: OPEN	Images Due JUN 20th for July Comp
JUN 6th	•	
JUN 20th	• MONTHLY COMPETITION – Open • Judge – TBC	
JUN 27th	• COMMITTEE MEETING	

HELP SUPPORT YOUR CLUB BY PURCHASING READY-MADE PHOTO MATS

Mats are available for sale at each meeting for a very reasonable price. All profits go back into the Club.

Colours are black, charcoal and off-white to suit the following print sizes:

5" x 7"	\$2.00 each
6" x 8"	\$2.50 each
8" x 10"	\$3.00 each
8" x 12"	\$4.00 each

FOR ALL MATS SEE **JOHN GALLICHAN**, OUR 'MASTER MAT MAKER'

NEW, MATS WITH HINGED FOAMCORE BACKING
Available in BLACK, CHARCOAL, OFF-WHITE

TO SUIT FOLLOWING SIZES,

5" X 7"	\$4.00 EA
6" X 8"	\$4.50 EA
8" X 10"	\$6.50 EA
8" X 12"	\$7.00 EA
12" X 16"	\$10.00 EA

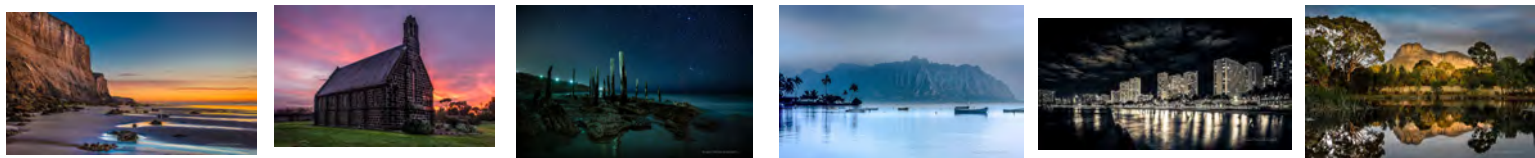
(12" X 16" Made to Order only)



Nick Randall Photography 2016-2017 18 Month Calendar

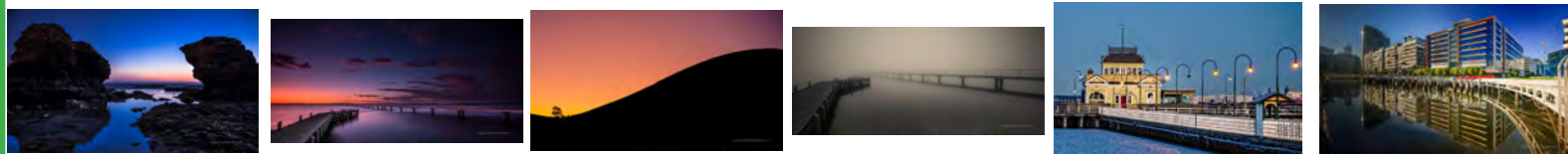
The calendar, small version can be ordered directly here:

[http://www.momentoshop.com.au/sp/id/16753/
auth/56403bb40f1f38.75977326](http://www.momentoshop.com.au/sp/id/16753/auth/56403bb40f1f38.75977326)



If any one is interested they can order directly from Memento -
no money comes to me though I just wanted to make it available.

The images were chosen by 150+ facebook friends, mostly photographers, from a short
list of 35 images. All were by popular vote except one 'editors choice'.



DO YOU HAVE ANY PHOTOGRAPHIC EQUIPMENT OR ACCESSORIES FOR SALE?

If you would like to advertise your pre-loved photography equipment or accessories here, please submit a detailed article, preferably with a picture, via email to:

editor@bellarinecameraclub.org.au

