

NEWSLETTER

BELLARINE CAMERA CLUB • ISSUE 013 • APRIL 2014



INSIDE ...

Competition Results - Queenscliff

*Christchurch - Earthquake City
by Tony & Liz Cavanagh*



FRONT PAGE

'Port Beam Reach'

by John Gallichan

1st Prize - Open Section

Bellarine Agricultural Show 2014

Bellarine Camera Club Inc.

Member of VAPS

MEETING VENUE

Springdale Neighbourhood Centre
17-21 High Street, Drysdale

CONTACT

Email info@bellarinecameraclub.org.au

Website www.bellarinecameraclub.org.au

COMMITTEE

President Shane Coles

Vice President Roger Northam

Treasurer John Gallichan

Secretary Lynne Bryant

Competition Secretary Val Moss

Committee Members Darren Henry, Jon Bagge,
Kerriane Hobbs,
Susan O'Connor

MEETINGS

Twice a month (excluding January):

1st Monday - Club Night

3rd Monday - Judging Night

NEWSLETTER

Distributed monthly to members via email;
also available on website.

Newsletter items to the editor (preferably in
Word format)

Images welcome - please submit via email in
jpg format as per competition sizing

Articles to be received by the 20th of the month
Submissions to:

editor@bellarinecameraclub.org.au

Images © by image makers.
All contents in this issue are for
information purposes only.

Guest Speaker

Our guest speaker this month was member Dean Reynolds who has spent much of his working life in professional audio visual creation, including working for one of the television channels in Melbourne, creating commercials for television, documentaries and many other varied commissions. Dean spoke about 'what makes a good audio visual' and explained many technical aspects and also outlined what programs to use covering the high-end to 'freebies'.

The evening was very informative and members no doubt would have learnt from his presentation.

At our next club meeting on 7th April, members will be able to show their own AV creations.



Visiting Judges

Thank you to the Corio Bay Camera Club 'judging panel of three' who were judges of our last competition. Our visiting judges on 17th March were Ian Creek and Colin Klein who gave some informative feedback. Also our thanks to the third judge on the panel, Cecily McCarthy, who was unable to attend on the night.



President Shane with judges Ian Creek and Colin Klein



President Shane with Jon Bagge, who was awarded Image of the Competition (to view image go to competition results page)

President's Report

Shane Coles

I have included an image showing my fashionable side. The photo was taken back in the '60s with my older sister. I can assure you felt line collars will come back into vogue. It was a time of innocence when you could let your kids wander around at the Royal Melbourne Show without having to worry about anyone stalking your them. Oh how times have change.

Well back to our club. The committee has been working overtime, organising a new syllabus, the Easter Exhibition, trying to ensure that the club runs smoothly and assist members in improving their photography. I urge all members to get involved in the upcoming Easter event. It is a great couple of days with the gala opening on the Friday night and spilling in to one of Geelong's major events for the year - oh well, we can all dream, but in our eyes it fits the bill. Attendees over the past few years have commented on the excellent display and the talent of our members. Be part of it and enjoy the feedback from people viewing your work.

I would also like to congratulate John Gallichan on his 1st prize at the Bellarine Show. Well done John! There was a little whisper in the back of the hall last meeting along the lines that he was so glad Jon Bagge didn't submit to the Show this year. This just goes to prove you have to be in it to win it. Members should also be aware of the upcoming VAPS convention in Geelong. Something worth going to if you can make it.

On the 25th of April we celebrate ANZAC day. I try to make it to the Melbourne march each year, but due to work and other commitments I have missed the last two years. I fear that most of the old diggers that have been captured in image by me over the years have now passed on, but I still find the sombre atmosphere something great to be part of. I intend to make the pilgrimage this year and if any club member wishes to make a day of it we can plan a train trip to the city and record images of those who have given to this country. Next year is a big one with 100 years celebrating ANZAC day. You can be sure I will be there to record the day and honour my grandfather's brother who gave his life at Gallipoli and remember my grandfather and father who came back to this country suffering illnesses and horrific injuries. More of that to come this time next year.

This year is well on the way and I am sure our guest speakers and competitions will enthrall you all. Our last guest speaker Dean Reynolds gave us an intriguing look into the professional side of AV work. I am sure all took something away from that lecture and I expect academy award standards at the AV night on 7th April.

Until next month

Shane



My quote for this month:

*"When you photograph people in colour,
you photograph their clothes. But when you
photograph people in black and white, you
photograph their souls."*

- Ted Grant

MARCH COMPETITION

Results - Set Subject: Queenscliff

Prints



1

Still Storm
Jon Bagge



2

Blue Hull on a Dull Morning
Roger Northam

- 1st: **Still Storm** Jon Bagge
- 2nd: **Blue Hull on a Dull Morning** Roger Northam
- 3rd: **Queenscliff Sunset** Bernie Henry
- Merit: **Moored at Queenscliff** Martin Young

3

Queenscliff Sunset
Bernie Henry



MARCH COMPETITION
Results - Set Subject: Queenscliff
EDIs



Image of the Competition

&

1

Sunshine on a Rainy Day

Jon Bagge

2

Homing Swallows

Tony Cavanagh



Image of Competition & 1st:

Sunshine on a Rainy Day Jon Bagge

2nd: Homing Swallows Tony Cavanagh

3rd: Squid Boat Lights Tony Cavanagh

Merits: Stormy Pier Jon Bagge

3

Squid Boat Lights

Tony Cavanagh



Merit:

Stormy Pier - Jon Bagge



Christchurch – Earthquake City

by Tony & Liz Cavanagh



Christchurch Cathedral as it was



Cathedral damage, front and bell tower gone



Access to Cathedral Square controlled by army checkpoint



City damage, Colombo Street



Catholic cathedral walls supported by shipping containers



Cars crushed ...



...even buses



Severe damage to Catholic cathedral

On Tuesday, 22 February 2011 at 12.51 pm, a 6.3 magnitude earthquake struck the city of Christchurch and surrounding areas. Although the most severe shaking lasted only 10-12 seconds, because it was a combination of both horizontal and vertical movement, the damage was almost unbelievable to anyone who knew the old Christchurch. Although it was smaller in magnitude than Christchurch's first quake of 4 September, 2010, the earthquake was more damaging and deadly for a number of reasons. The epicentre was closer to Christchurch, and shallower at 5 kilometres (3 mi) underground, whereas the September quake was measured at 10 kilometres (6 mi) deep.

The February earthquake occurred during lunchtime on a weekday when the CBD was busy, and many buildings were already weakened from the previous quakes. For these reasons alone, the death toll was 185 persons, over half of them occurring in the six-storey Canterbury Television Building which collapsed and caught fire. 80% of the city's water and sewerage system was destroyed or badly damaged; more than 80% of the city had no power following the earthquake, although by superhuman effort, it was restored to over 95% of Christchurch within a week. Most of the central business area was badly damaged and was closed off by fencing (with military personnel and police at checkpoints); the city was only reopened earlier this year but as the pictures will show, there is still much to be done. Some 10,000 homes were condemned or destroyed and the cost to the country is estimated to be around NZ\$40 billion!!! It could be 20 to 30 years before Christchurch fully recovers.

You may well be wondering about the above facts and figures but my wife Liz and I have a special affection for Christchurch – our oldest daughter and her family live there and we have been visiting NZ regularly since 2002. Luckily, she lives in an area which was safe (although they lost a chimney, had cracked walls and suffered

from things like everything in fridges and the pantry being tipped onto the floor and the TV crashing over). Even closer to home, my wife was in Christchurch helping out when the third major quake occurred on 13 June 2011. She had just picked the grandchildren up from school, when she heard a roar, then the car started shaking violently. The kids nonchalantly confirmed that it was "another earthquake" but then Liz had to negotiate streets with fallen power lines and other debris – not a nice experience.

We have been back several times since and taken lots of pictures so I thought we could share some with you, to give you some idea of what things were like for local residents. Many were taken by Liz in June 2011 which I think show how hard it is when you have no water or sewerage for weeks, or when you have liquid soil (liquefaction) deposited all over your street or in your yard. We also include street scenes and typical damage to such iconic structures as the two cathedrals and many other heritage buildings. There are also a few from several of the books published, showing disasters no seen by the public. Next month, we will have pictures of how the city looked in November 2013 and plans for the future. ♦

...more images from Christchurch – Earthquake City by Tony & Liz Cavanagh



Cry for a city



but they still have WiFi ...



One of the lucky ones



Abandoned books in CERA restricted site



Where once were buildings, now are carparks



Forlorn messages, 'we are still open for business'



The houses - every one in danger



Shipping containers to protect the main road



Supported walls of a house - a fruitless effort



Million-dollar houses on the hills, all condemned



No water - public water station fed from bore



Above: typical street in bad areas - this was a bitumen road Below: Temporary water connection from the mains



Liquefaction - this was what it was like



Life after the earthquake - porta-loos on every corner



Twisted and damaged walk bridge

BCC Member Success at the Bellarine Agricultural Show

John Gallichan has taken out the first prize in the photography open section at the Bellarine Agricultural Show for his image 'Port Beam Reach' featured on this month's front cover of our newsletter.

Congratulations - well done John !



Bellarine Agricultural Show Photography Open Section 1st Prize
March 9th 2014 Winner, John Gallichan, Port Beam Reach

VAPS Convention

This year the Geelong Camera Club will host the annual VAPS convention and also celebrate their 125th year of camera club service.

A full range of innovative presenters and workshops along with an abundance of outdoor photographic opportunities await participants at this year's convention.

Bellarine Camera Club will host a self-drive excursion to the Clifton Springs area on Sunday afternoon, and on Monday morning will host an early photo-shoot at Queenscliff and surrounds.

Further information on all the convention activities and costs can be found on our website under the 'VAPS Convention 2014' tab.



The Victorian Association of Photographic Societies Inc

in conjunction with the Geelong Camera Club is proud to present

The 2014 Annual Interclub Exhibition & Convention



Saturday the 24th and
Sunday the 25th of May 2014
at the
Mercure Hotel, Geelong
with
Friday night and Monday
morning photo opportunities



Enrolment
Registration forms are available at
vaps.com.au

General enquiries
Heather Prince: 0400 144 017

All correspondence to
Geelong Camera Club,
P.O. Box 781,
Geelong,
3220



General Overall Times:
From 8am Saturday 24th May to Sunday
5pm
Friday Night Photo Walk 6pm
Monday Queenscliff Photography Shoot 7am

Venue:
Mercure Hotel Conference Centre
Cnr Gheringhap St & Myer St, Geelong.
75 km west of Melbourne.

Images above by Heather Prince, Geelong Camera Club



OCEAN GROVE camera & photo

Your monthly photography tip from
Ocean Grove Camera & Photo:

WHITE BALANCE.

Are you making sure your colours look right? All DSLR cameras (and a lot of compacts) come with an option to select the correct WHITE BALANCE (WB). In other words, you can tell your camera what sort of light you are shooting in. For example, sunlight is vastly different to fluorescent light which in turn differs from shade. Many amateur photographs don't realise you can preset your camera's WB accordingly and reduce the chances of colours not looking as you intended. This is particularly important when it comes to skin tones. Getting these right on location can reduce significantly the time spent in photoshop correcting colour.

Locate your camera's WB settings and change them under any lighting conditions to see just the profound effect WB has on your photos.

Of course, shooting RAW files means you can select your preferred WB setting later in Photoshop or Lightroom. But if you are just shooting jpg files, getting this important setting right will improve your photography straight out of camera.

Happy shooting - Brendan at Ocean Grove Camera & Photo



**BELLARINE CAMERA CLUB
MEMBERS RECEIVE
20% OFF ALL
CANVAS PRINTS!**

Show your member card
and save!

ENTRY LEVEL DSLR WORKSHOP
NOW TAKING BOOKINGS FOR
WEDNESDAY APRIL 16th 6pm - 8.30pm in store.
\$59 for club members. Unlock your potential!



OCEAN GROVE
camera & photo

OCEAN PLAZA - OCEAN GROVE - PHONE 5255 3311
www.cameraandphoto.com.au

Tips

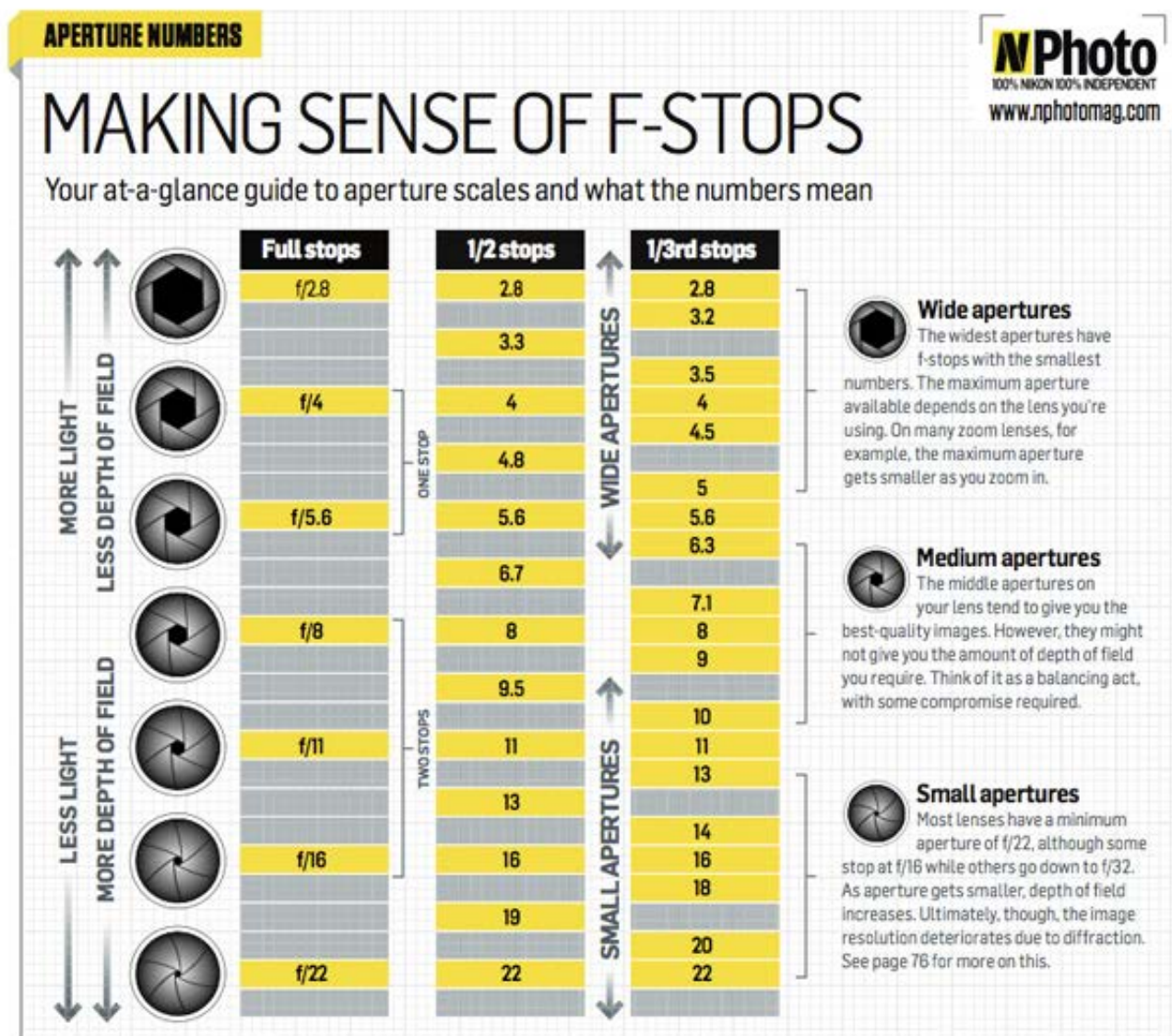
Having problems understanding f/stops? Below is a chart from Digital Camera World website that you may find interesting: For a print-quality copy please go to their website:

www.digitalcameraworld.com/2012/03/17/free-f-stop-chart-master-your-aperture/

Free f-stop chart: master your aperture

One thing we consistently hear from people is confusion about aperture and just what exactly those numbers mean. Understanding aperture can take some time for a beginning photographer, but hopefully we can speed this process up for you! Below is a handy f-stop chart put together by our friends at N-Photo magazine which you can drag and drop on to your desktop.

Print it out – print three out! – and stick it in your camera bag. The sooner you start understanding aperture and f-stops, the sooner you'll start to get sharper, more creative pictures.



Tips

3 ways to affect depth of field: free cheat sheet

Depth of field, or ability to control which parts of your pictures are sharp, is one of the main advantages of owning an SLR camera. Look at a scene with your own eyes, and everything from your feet to the horizon is usually in focus. But your pictures do not need to look like this.

You can set up your digital camera so that only certain parts of the shot are in sharp focus, and others are artistically blurred. This allows you to create emphasis where you want it – and to hide elements that would otherwise prove distracting.

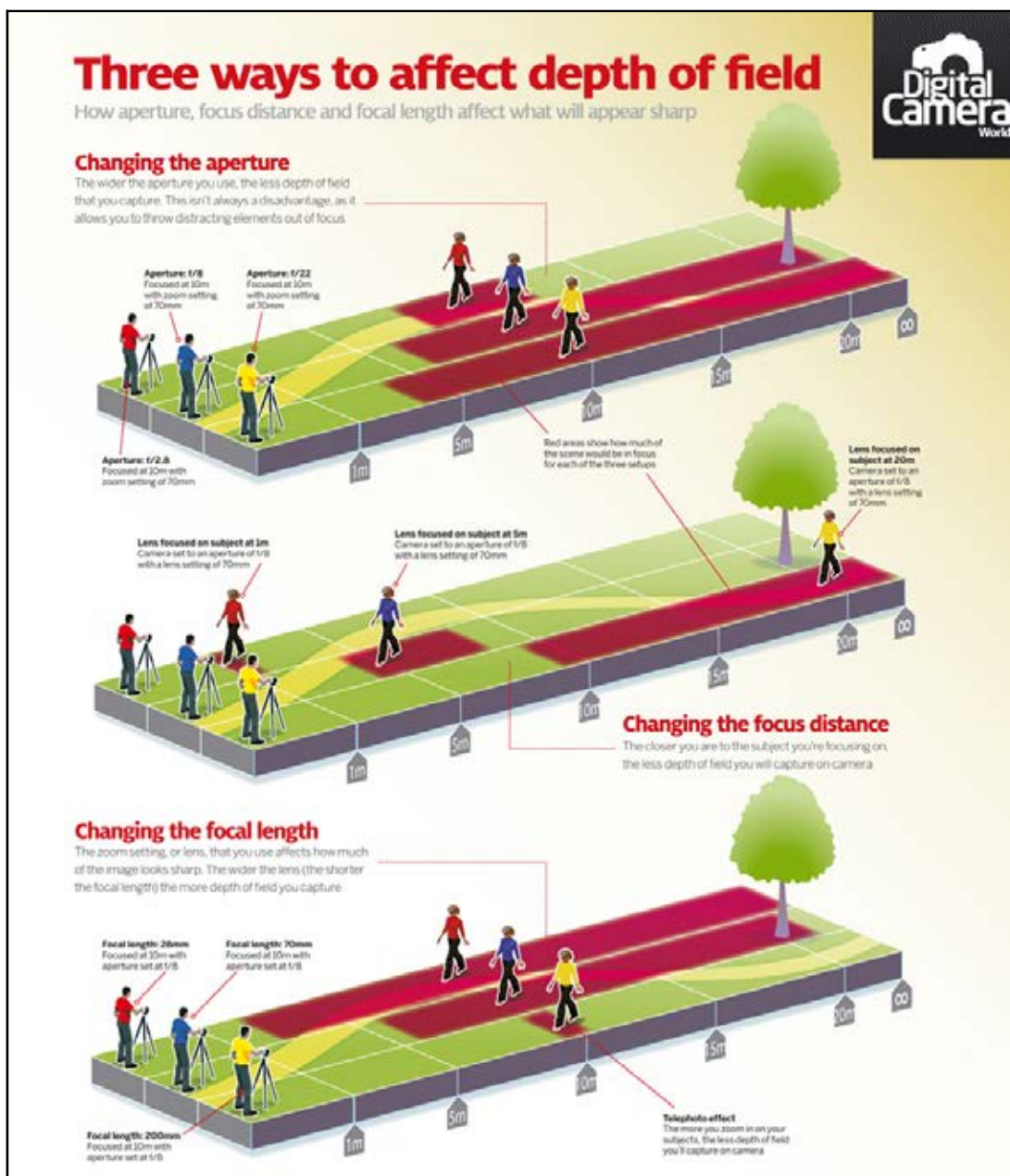
Your lens can only focus sharply at one distance. However, due to the optical property known as 'depth of field' a range of distances will actually appear sharp. This zone of sharpness will vary enormously.

Our latest [photography cheat sheet](#) examines three common ways you can affect depth of field. Our infographic looks at how aperture, focus distance and focal length will affect what appears sharp in your images (for more on this you might also find useful our guide to [Depth of field: what you need to know for successful images](#)).

Below is a chart from Digital Camera World to help you understand depth of field.

For a print-quality copy please go to their website:

www.digitalcameraworld.com/2012/05/31/3-ways-to-affect-depth-of-field-free-cheat-sheet/



Notice Board

URGENT REMINDER Easter Exhibition 19h April 2014

Organisation of the Easter Exhibition is well on the way. Members are urged to take part to continue the great display we put on each year.

Another reminder that Shane needs to know numbers for the exhibition, so please submit your requirements (using the Exhibitors' Entry Form emailed to all members on 27 February)

NO LATER THAN THE REVISED DEADLINE OF MONDAY 7TH APRIL.

Also, your assistance on Friday and/or Saturday would be greatly appreciated - please complete all questions on the Exhibitors' Entry Form, and either email or hand to Shane at our 7th April meeting; thank you.

Have you started thinking about photographing for this competition yet?



175th Year Commemoration of the Eastern Cemetery Photography Competition

This photography competition is open to members of Geelong, Corio Bay and Bellarine camera clubs only. Each entrant may submit up to 3 images.

The competition opens on 1st March 2014 and closes at 4:00pm 1st September 2014. Images must have been taken after 1st March 2014.

For full competition brief and guidelines please go to our website to find in the dropdown Competitions tab.

Future Guest Speakers

Shane Coles has been elected as Guest Speaker Co-ordinator for our club. His role will be to liaise with nominated speakers and finalise speaking dates.

All members are asked to seek out potential speakers. If you know anyone who may fit the bill please speak to them, get their contact details and send them to Shane, who will then liaise with them and finalise their attendance. Shane will not be following up speakers if no contact has been made by the member to confirm their interest.

Newsletter Articles

And thanks yet again to Tony Cavanagh for submitting another interesting article this month for members' enjoyment.

Members who would like to share their photographic stories, please refer to the details on how to submit, which are in the left-hand column on page 2.

Competition Award EDIs Required

It would be greatly appreciated if members, who receive an award for a printed image, could send an EDI for inclusion in the newsletter as soon as possible after receiving the award.

please submit to:

editor@bellarinecameraclub.org

For Sale

HELP SUPPORT YOUR CLUB BY PURCHASING READY-MADE PHOTO MATS

Mats are available for sale at each meeting for a very reasonable price. All profits go back into the Club.

Colours are black, charcoal and off-white to suit the following print sizes:

| | |
|----------|-------------|
| 5" x 7" | \$2.00 each |
| 6" x 8" | \$2.50 each |
| 8" x 10" | \$3.00 each |
| 8" x 12" | \$4.00 each |

Special sizes can be made to order
(up to the maximum mat size of 40 x 50cm)\

FOR ALL MATS SEE JOHN GALLICHAN, OUR 'MASTER MAT MAKER'

NEW, MATS WITH HINGED FOAMCORE BACKING
Available in BLACK, CHARCOAL, OFF-WHITE



TO SUIT FOLLOWING SIZES,

| | |
|-----------|------------|
| 5" X 7" | \$4.00 EA |
| 6" X 8" | \$4.50 EA |
| 8" X 10" | \$6.50 EA |
| 8" X 12" | \$7.00 EA |
| 12" X 16" | \$10.00 EA |

(12" X 16" Made to Order only)



DO YOU HAVE ANY PHOTOGRAPHIC EQUIPMENT OR ACCESSORIES FOR SALE?

If you would like to advertise your pre-loved photography equipment or accessories here, please submit a detailed article, preferably with a picture, via email to:

editor@bellarinecameraclub.org.au

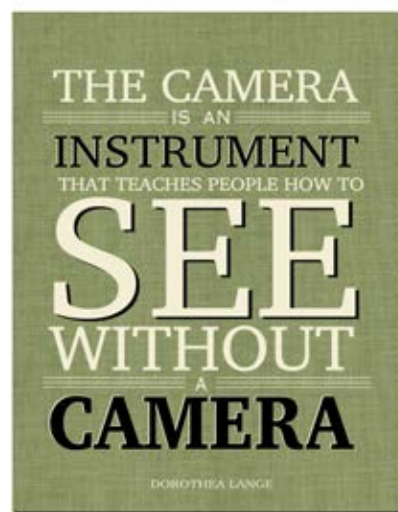
Syllabus - April & May

April 2014

- 7 - Workshop - members invited to submit 3-minute AV
- 7 - Prints & EDIs due for Set Subject: Night Shot
- 19 - Annual Easter Exhibition at SpringDale (set up Good Friday, Exhibition Easter Saturday)
- 28 - Committee Meeting

May 2014

- 5 - April Competition Judging Night (judging has been re-scheduled due to Easter)
- 5 - Prints & EDIs due for Open competition
- 19 - Judging - Open competition
- 24-25 - VAPS Convention Geelong (refer to VAPS Convention Program)
- 26 - Committee Meeting



On in Geelong...

Events coming up in the region that may provide some good photographic opportunities:

- | | |
|------------------|---|
| April | Throughout April there are many markets in the Geelong region - for further information on dates etc. - http://www.whatsoningeelong.com.au/index.php/see-a-do/markets |
| Apr 5-6 | Geelong Pirate Family Weekend (website: http://geelongpiratefamilyweekend.weebly.com) |
| Until Apr 22 | Country Dahlias Festival, 195 Mathison Rd Winchelsea - Ph 03 5267 2389 |
| Good Friday | Inverleigh Hotel and District's Royal Childrens Hospital Good Friday Appeal Family Fun Day Victoria Park, Inverleigh (website: http://ihdgfa.wix.com/ihdgfa) |
| Apr 20 | Bellarine Camera Club Easter Exhibition |
| Apr 19-20 | Rotary Club Drysdale Annual Easter Art Show |
| Apr 20 | Bellarine Estate Winery Easter Egg Hunt (website: www.easteregghunt.org.au/#the-hunt) |
| Until 30th April | Cape Otway Lightstation - Otway Dinosaurs Exhibition (website: www.lightstation.com) |
| Jun 6-9 | National Celtic Festival (website: http://www.nationalcelticfestival.com) |