

NEWSLETTER



BELLARINE CAMERA CLUB • ISSUE 026 • JUNE 2015

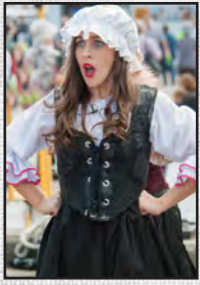
INSIDE ...

The WOW World of Wearable Art & Classic Cars Museum

Portrait Competition Winners

Geelong After Dark Pics

New Syllabus



FRONT PAGE

Pirates of Penzance street
performance by Gilbert and
Sullivan Scoiety of Tasmania.
By Greg Wane

Bellarine Camera Club Inc.
Member of VAPS

MEETING VENUE

SpringDale Neighbourhood Centre
17-21 High Street, Drysdale

CONTACT

Email info@bellarinecameraclub.org.au
Website www.bellarinecameraclub.org.au

COMMITTEE

President	Shane Coles
Vice President	Lynne Bryant
Treasurer	John Gallichan
Secretary	Lynne Bryant
Committee Members	Jon Bagge
	Darren Henry
	Vikki Gage
	Gordon Traill

Competition Secretary Val Moss

MEETINGS

Twice a month (excluding January):
1st Monday - Club Night
3rd Monday - Judging Night

NEWSLETTER

Editor - Jon Bagge
Distributed monthly to members via email;
also available on website.
Newsletter items to the editor (preferably in Word
format)
Images welcome - please submit via email in jpg
format as per competition sizing
Articles to be received by the 20th of the month
Submissions to: editor@bellarinecameraclub.org.au

Images © by image makers.
All contents in this issue are for
information purposes only.

Next meeting: Monday 1st June

WORKSHOP NIGHT

Bring ya gear!

Mounting images with John Gallichan

Lightpainting with Jon Bagge

Still Life Photography

Bring: Camera, tripod, lighting source,
and props for the Still Life. Jacket for
outside lightpainting



Calling all members.....

Members are invited to submit their best images for publication
consideration in next month's newsletter.

For front cover & back cover consideration, portrait orientation images
of any subject would be appreciated - images do not need to have been
entered into a competition (size to be at least 1.5mb for cover portrait
images).

**This newsletter will only ever be as good as the contributions. We
encourage all members to submit images, stories behind the images,
great locations and tips for the newsletter.**

See side panel on this page for submission details and 'date by'.

President's Report

Shane Coles



Hi all

This month's report will be short and sweet. Our annual exhibition is drawing closer and I thank all those members who have submitted entry forms for their effort. We will have in excess of 250 images on show along with our EDI presentation depicting club members efforts over the past 12 months.

I am sure all who take part will once again promote our club and give the general public an insight to the talents that we have within us. The event will kick off on Friday 19th June with an official opening by Craig Taylor (Bendigo Bank Manager, Drysdale). Members and family are all welcome. We plan to start the proceedings at about 6.30pm. Members are encouraged to bring a plate and drink. After the opening members and guests will be allowed to view the exhibition.

The exhibition will run for 2 days (20th and 21st of June).
Please bring family and friends and make the event successful.

Quote of the month:- It is more important to click with people than to click the shutter..Alfred Eisentaedt

Shane Coles

May Competition - Open

*Prints
A Grade*

1st & Image of the Competition



*Mother and Son
by Janet Young*

May Competition - Portrait

*Prints
A Grade*

2nd



*Deep In Thought
by Darren Henry*

3rd



*Cool
by Darren Henry*

May Competition - Portrait

EDI's A Grade

1st



*Young Mother
by Martin Young*

2nd



*Tony
by Darren Henry*

May Competition - Portrait

EDI's A Grade

=3rd



*Self Portrait
by Sheridan La Peyre*

=3rd



*Sad Eyes
by Sheridan La Peyre*

May Competition - Portrait

EDI's B Grade

1st



Generations
by Vikki Gage

May Competition - Portrait

EDI's B Grade

2nd



Sharing Grief
By Greg Wane

3rd



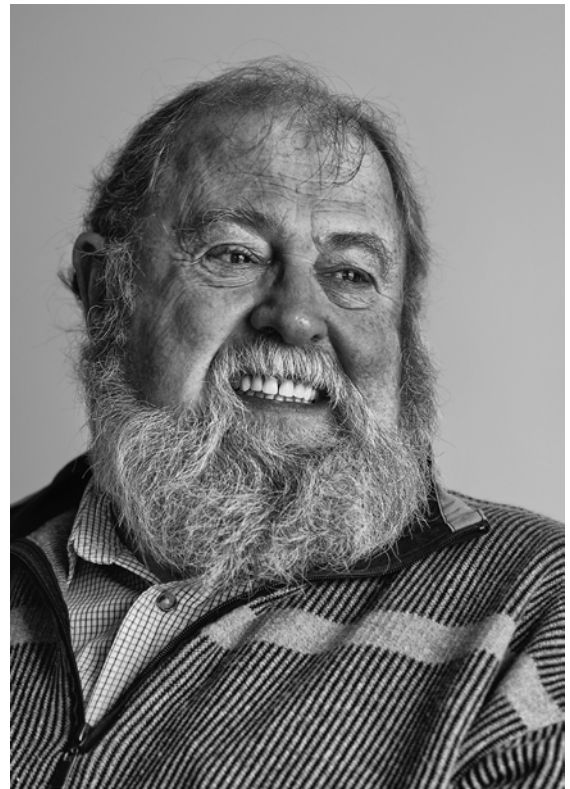
Fabric Seller
By Greg Wane

May Competition - Portrait

Merits



Gordon By Liz Ryan



Big Kev By Martin Young



In Conversation By Greg Wane



Panio Man By Ellen McIlroy



GEE LONG
AFTER
DARK
FRIDAY 8 MAY 2015
WWW.GEE LONGAFTERDARK.COM.AU

Photos by Jon Bagge



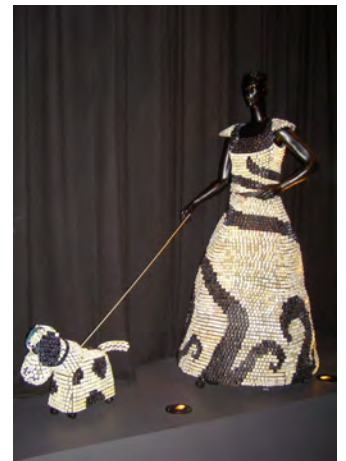
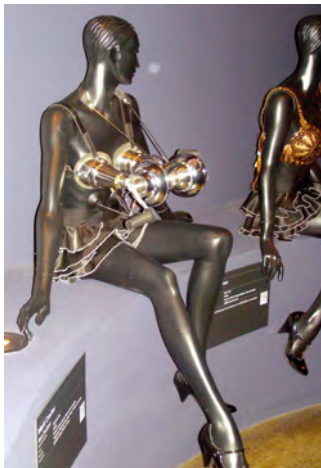
New Town Hall projections starting Friday 29th May

The WOW World of Wearable Art & Classic Cars Museum, Nelson, New Zealand

By Tony Cavanagh



We have visited the large town of Nelson, in the centre north of the South Island of New Zealand, on several occasions and have always thought about going to see the widely-publicised WOW Museum. I guess what stopped us was the perception that it was so off-the-wall and avant garde (well, the publicity brochures seemed to emphasize these aspects) that us old wrinkles wouldn't probably understand or appreciate what they were trying to do. Well, in October last year, we bit the bullet and spent most of an afternoon there. We were definitely the oldest people (many of the others seemed to be students or art lovers) but it was an exhilarating and thoroughly enjoyable experience and definitely worth going. We marveled at the imagination and flair of the designers in creating the costumes we saw, and I loved the relaxed attitude towards photography, you could photograph almost anything providing it was not for commercial purposes, very rare in most museums. The real surprise was the Classic Car Museum under the same roof which was one of the best I have seen, with an emphasis on rare and sought after vehicles and some of the most famous classic designs of vehicles from around the world.



The original concept for the museum, “to encourage her creative peers to create artwork/costumes to be worn on the human body”, was the vision of Nelson sculptor Suzie Moncrief (now Dame Suzie) when she held a single evening show in 1987 to promote her small cottage art gallery. This has grown to a highly successful WOW Awards Show each spring in Wellington when hundreds of artists from around the world, not just from New Zealand, submit WearableArt items which are judged in several categories – eg Avant Garde (where art and fashion collide), Illuminated Illusion (where things glow in the dark), Open (where literally anything goes) and the unique and very popular Bizarre Bras (where the mind literally boggles). Each successful entry is individually choreographed for presentation. The show is renowned for its amazing lighting, special effects, music and dance and each exhibit stands or falls on the quality of its choreography as there is no narration, no explanation and it must cross any language barriers. The current building was opened in 2001 focusing on wearable art and later the Car Museum was added but I have been unable to determine the name of the owner, who must have been a very brave or far sighted individual to even consider combining way-out art and costuming with something as prosaic as automobiles! It is largely impossible to describe most of the creations and I will try to show some through photographs but the exhibitions are changed twice yearly so what is currently showing will be different to what we saw.

The WOW World of Wearable Art & Classic Cars Museum, Nelson, New Zealand Continued

There are four main areas – an entrance gallery showing selections from previous WOW Award Shows, a Reflections Art gallery where work from a range of artists is on display and for sale, an Audio Visual Studio where you can watch previous Award Show presentations and which really brought home to me the importance of choice and type of music in enhancing a slide show or a choreographed piece of work and the Classic Car Galleries. Unfortunately, many of the vehicles were difficult to photograph as they were displayed under (generally dark) theatrical lighting and required flash but I hope that you enjoy the ones I have selected. And as for the rest, you be the judge. We spent over three hours there and thoroughly enjoyed it, and will go again next time we are in Nelson.

Tony Cavanagh
Ocean Grove





BELLARINE CAMERA CLUB FEBRUARY-JUNE 2015 SYLLABUS

DATE	SUBJECT	IMAGES DUE for MONTHLY COMPETITION
------	---------	--

IMPORTANT

For the latest syllabus information, competition rules, set subject definitions and image naming conventions please refer to our website: bellarinecameraclub.org.au

FEBRUARY 2015	OPEN (<i>Subject of your choice</i>) EDI's to be submitted by February 2 nd as normal, and Prints to be handed in on the night February 16th	Images Due 2 FEB for Feb Comp & FEB 16 for March Comp
FEB 2	• NIGHT WALK – <i>Barwon Heads – meet at bridge car park, 6pm onwards for a BBQ and photo shoot</i>	
FEB 16	• MONTHLY COMPETITION – Open Judge - BCC Members	
FEB 23	• COMMITTEE MEETING	
MARCH 2015	SET SUBJECT: NIGHT WALK From Feb shoot Barwon Heads	Images Due 16 MAR for April Comp
MAR 2	• Portrait workshop – bring your camera • PRINTS & EDIs DUE	
MAR 16	• MONTHLY COMPETITION - Set Subject – Barwon Heads. Judge - TBC	
MAR 23	• COMMITTEE MEETING	
APRIL 2015	SET SUBJECT: OPEN - Image of your choice	Images Due APR 20 for May Comp
APR 7	• Easter Monday – no meeting	
APR 20	• MONTHLY COMPETITION – Open Judge – TBC	
APR 28	• COMMITTEE MEETING	
MAY 2015	SET SUBJECT: Portrait.	Images Due 18 MAY for June Comp
MAY 4	• Guest Speaker – Paul Copland (To be confirmed) Vet who served in Cambodia	
MAY 18	• MONTHLY COMPETITION – Portrait Judge – confirmed	
MAY 25	• COMMITTEE MEETING	
JUNE 2015	SET SUBJECT: ANZAC Centenary	Images Due 15 JUN for July Comp
JUN 1	• WORKSHOP – Still Life, Star Trails, Light painting, Bring you camera night	
JUN 15	• MONTHLY COMPETITION – Set Subject (ANZAC Centenary) Judge – TBC	
JUN 29	• COMMITTEE MEETING	



BELLARINE
CAMERA CLUB INC
www.bellarinecameraclub.org.au

BELLARINE CAMERA CLUB July - December 2015 SYLLABUS

DATE	SUBJECT	IMAGES DUE for MONTHLY COMPETITION
------	---------	--

IMPORTANT

For the latest syllabus information, competition rules, and image naming conventions
please refer to our website: bellarinecameraclub.org.au

July 2015	SET SUBJECT: - Open	Images Due 20 July for Aug Comp
July 6	<ul style="list-style-type: none"> • Martin Young – Depth of Field 	
July 20	<ul style="list-style-type: none"> • MONTHLY COMPETITION – Set Subject - Open Judge – Confirmed 	
July 27	<ul style="list-style-type: none"> • COMMITTEE MEETING 	
August 2015	SET SUBJECT: - Monochrome	Images Due Aug 17 for Sept Comp
Aug 3	<ul style="list-style-type: none"> • A.G.M • Workshop – tips and tricks for camera's – Nikon, Canon, Olympus Bring along your camera 	
Aug 8	<p>Interclub competition – Colac - Portraits EDI'S The Set Subject in EDI's is "Portrait". The definition we have come up with for this is simple and concise.</p> <p>"Image of person or persons that can range from head to full length study. Can include candid photographs or formal portraits"</p>	
Aug 17	<ul style="list-style-type: none"> • MONTHLY COMPETITION - Monochrome Judge – Confirmed 	
Aug 24	<ul style="list-style-type: none"> • COMMITTEE MEETING 	
September 2015	SET SUBJECT: - Architecture	Images Due 21 Sept for Oct Comp
Sept 7	<ul style="list-style-type: none"> • Guest speaker – Val Moss – Image assessments 	
Sept 21	<ul style="list-style-type: none"> • MONTHLY COMPETITION – Architecture • Judge - Confirmed 	
Sept 28	<ul style="list-style-type: none"> • COMMITTEE MEETING 	
October 2015	SET SUBJECT: - Open	Images Due 19 Oct for Nov Comp
Oct 5	<ul style="list-style-type: none"> • Guest Speaker – 	
Oct 19	<ul style="list-style-type: none"> • MONTHLY COMPETITION – Open Judge - Confirmed 	
Oct 26	<ul style="list-style-type: none"> • COMMITTEE MEETING 	
November 2015	SET SUBJECT :- Abstract Photography	
Nov 2	<ul style="list-style-type: none"> • Guest Speaker – Lynne Bryant - Antarctica 	
Nov 16	<ul style="list-style-type: none"> • MONTHLY COMPETITION – Abstract Photography Judge – Confirmed 	

HELP SUPPORT YOUR CLUB BY PURCHASING READY-MADE PHOTO MATS

Mats are available for sale at each meeting for a very reasonable price. All profits go back into the Club.

Colours are black, charcoal and off-white to suit the following print sizes:

5" x 7"	\$2.00 each
6" x 8"	\$2.50 each
8" x 10"	\$3.00 each
8" x 12"	\$4.00 each

Special sizes can be made to order
(up to the maximum mat size of 40 x 50cm)

FOR ALL MATS SEE JOHN GALLICHAN, OUR 'MASTER MAT MAKER'

**Last Chance for Mats before the Exhibition
See John Gallichan ASAP**

*NEW, MATS WITH HINGED FOAMCORE BACKING
Available in BLACK, CHARCOAL, OFF-WHITE*



TO SUIT FOLLOWING SIZES,

5" X 7"	\$4.00 EA
6" X 8"	\$4.50 EA
8" X 10"	\$6.50 EA
8" X 12"	\$7.00 EA
12" X 16"	\$10.00 EA

(12" X 16" Made to Order only)

DO YOU HAVE ANY PHOTOGRAPHIC EQUIPMENT OR ACCESSORIES FOR SALE?

If you would like to advertise your pre-loved photography equipment or accessories here, please submit a detailed article, preferably with a picture, via email to:

editor@bellarinecameraclub.org.au

