

NEWSLETTER

BELLARINE CAMERA CLUB • ISSUE 028 • AUGUST 2015



INSIDE ...

Open Competition Results

Photos from Open House Melbourne



FRONT PAGE
Cunningham Pier
by Jon Bagge

Bellarine Camera Club Inc.
Member of VAPS

MEETING VENUE
Springdale Neighbourhood Centre
17-21 High Street, Drysdale

CONTACT
Email info@bellarinecameraclub.org.au
Website www.bellarinecameraclub.org.au

COMMITTEE

President	Shane Coles
Vice President	Gordon Traill
Secretary	Lynne Bryant
Treasurer	Vikki Gage
Committee Members	Jon Bagge Darren Henry John Gallichan Greg Wane

Competition Secretary	Val Moss
Membership Secretary	Vikki Gage

MEETINGS

Twice a month (excluding January):
1st Monday - Club Night
3rd Monday - Judging Night

NEWSLETTER

Editor - Jon Bagge
Distributed monthly to members via email;
also available on website.
Newsletter items to the editor (preferably in Word
format)
Images welcome - please submit via email in jpg
format as per competition sizing
Articles to be received by the 20th of the month
Submissions to: editor@bellarinecameraclub.org.au

Images © by image makers.
All contents in this issue are for
information purposes only.

WANTED

PHOTOS AND ARTICLES

I have almost run out of my images
for use on the back and front cover
of this newsletter. Its now over to
YOU the members. Please send
me suitable images ASAP or there
will be blank pages in next months
newsletter!

SEE BELOW

Calling all members.....

Members are invited to submit their best images for publication
consideration in next month's newsletter.

For front cover & back cover consideration, portrait orientation images
of any subject would be appreciated - images do not need to have been
entered into a competition (size to be at least 1.5mb for cover portrait
images).

**This newsletter will only ever be as good as the contributions. We
encourage all members to submit images, stories behind the images,
great locations and tips for the newsletter.**

See side panel on this page for submission details and 'date by'.

President's Report

Shane Coles



Welcome to my presidents report for July 2015..

This month I have included an image that I took many years ago in Brooklyn, New York. My boy Curtis complained about the cost of photography in his recent cook book. Me, being the entrepreneur came up with the idea to do a photo shoot in Brooklyn with him and give him the images. Not only did I get some great images of the food haunts in this section of New York, but I also ate free. I can gladly say some of the images have been used in his career. Cost free! Recently I noticed a site for the Worlds best Food photographer. I thought . That could be me. It is an annual competition allowing anyone to enter with an image relating to food. The above image is to be entered. I don't know if I have any chance of winning, but I have heard that one of the judges this year is a chef called Curtis Stone. I might just fluke a Merit....?? I will keep you posted.

I urge members to enter the many and varied comps that are available on the web. Now days with email it is so much simpler. I also urge members to visit our Facebook site and participate or nominate a daily excursion posted on the site by members. Our financial year is coming to an end and a new committee formed. I would like to thank this year's committee members for the fantastic job they have done. It is not a simple task being a part of a committee and I know the future reps will do a similar job.

I urge members to keep up with the syllabus and plan ahead for future competitions.

Each month I will leave you with a meaningful quote that sums up photography:-

"The camera makes you forget you're there. It's not like you are hiding but you forget, you are just looking so much."

-Annie Leibovitz

Speak to you next newsletter

Shane Coles

Club President.

July Competition - Open

*Prints
A Grade*

1st & Image of the Competition



*Honeyeater
by Greg Wane*

July Competition - Open

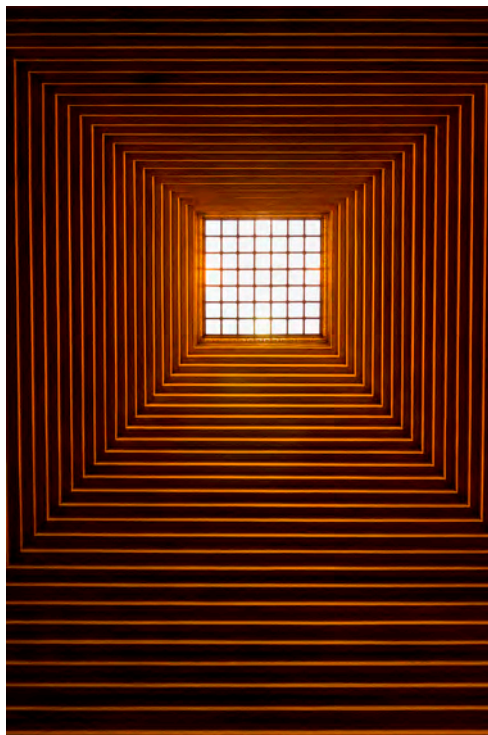
*Prints
A Grade*

2nd



*Birds on a wire
Janet Young*

3rd



*Shrine of Remembrance
Gordon Traill*

July Competition - Open

EDI's A Grade

1st



Is My Food Down There?
Ellen McIlroy

2nd



Eastern Yachts
Jon Bagge

July Competition - Open

EDIs A Grade

3rd



*Burnie Pilot Launch
Greg Wane*

July Competition - Open

EDI's B Grade

1st



Electric Paradise Waikiki II
Nick Randall

2nd



Starlit Jetty, Port Willunga
Nick Randall

3rd



*Mt Sturgeon at Sunrise
Nick Randall*

Prints B Grade

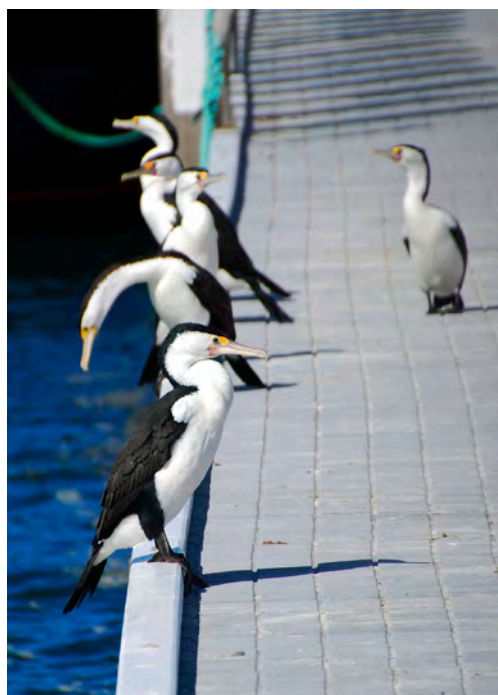
1st Gordon Liz Ryan

Image Unavailable

2nd The Carousel Liz Ryan

Image Unavailable

3rd



*Me and My Mates
Daryl Haywood*

July Competition - Open Merits



Bic Point

Darren Henry



Hi There!

Ellen McIlroy

My Open House Melbourne

<http://www.openhousemelbourne.org/>

Images by Jon Bagge, Words from Open House Melbourne



An early start on the train to the city gave me time to flick through the program for Open House. I was stunned to see one of my images from 2014 appearing in the program. Travelling via the new regional rail link still had the train arriving 10 minutes late, and leaving me no option other than to run to the MCG to make my first stop on my tour.



It was a whistlestop tour of the stadium, full of impressive facts and feats. The previous night there was a soccer match, and we could see the groundsmen changing over the pitch to AFL. The shot on the right shows the man with the 50 metre line string ready to mark the line.





Next stop was donning a hi-vis vest, and heading down in the depths of the Arts Centre to the power plant room. We saw the heating and cooling plants, and learnt about the emergency back up generators. The plant also supply emergency power to the National Gallery of Victoria, who have a number of works kept in a controlled environment and require a permanent power supply. We visited a massive space in the heart of the building full of air ducting. The purpose of which is to supply ventilation as quietly as possible. We also passed the seat repair bench!

After a spot of lunch, we walked to the Portable Iron Houses.

These 19th century portable iron houses were once a common sight in South Melbourne, however there are now very few examples left in the world. When gold was discovered in Victoria in 1851, the resultant influx of migrants created a ready market for new housing.

The three corrugated iron and wood houses – Patterson, Bellhouse and Abercrombie – are all the result of significant preservation campaigns. Patterson House is on its original site and was once one of a terrace of similar houses, while Bellhouse was saved from demolition in Fitzroy in 1971 and Abercrombie was rescued from North Melbourne in 1981.

Portable iron buildings (including cottages, churches, theatres and shops) were bought from catalogues. They arrived flat packed and ready to be assembled. The crates the buildings arrived in were then used to line the interior walls. You can see owner Robert Patterson's initials and Melbourne destination numbers in Patterson House.



Esplanade Vaults

In the 1890s, public transport on St Kilda's Upper Esplanade was upgraded to a new cable tramway, replacing the old horse-drawn omnibus managed by the Melbourne Tramway and Omnibus Company. This project was designed and managed by then city surveyor, WB Downe.

The Upper Esplanade roadway needed to be widened to accommodate the new tram tracks. As part of the embankment works, provision was made for ten shops with arched ceilings and verandahs facing onto the Sea Baths on the Lower Esplanade. The shops sold a range of merchandise suited to the sea-side location, including ice cream, nuts, confectionery, haberdashery and fish and chips. Tea rooms were also located on the site.

The remnant structure of these shops is now known as the Esplanade Vaults. At the end of the row of shops, a wide run of bluestone steps ran between the Upper and Lower Esplanade.

The cable tramway, which ran from Acland Street to St Kilda Station, was deemed a great success, as noted in the St Kilda Council Annual Report, 1891: 'The Esplanade Cable Tramway is regarded as perhaps the most satisfactory, and complete in the world, and is greatly appreciated by the travelling public, in and around the metropolis.'

The shop verandahs were removed in the 1950s and the vaults were bricked up when Jacka Boulevard was widened in the 1970s



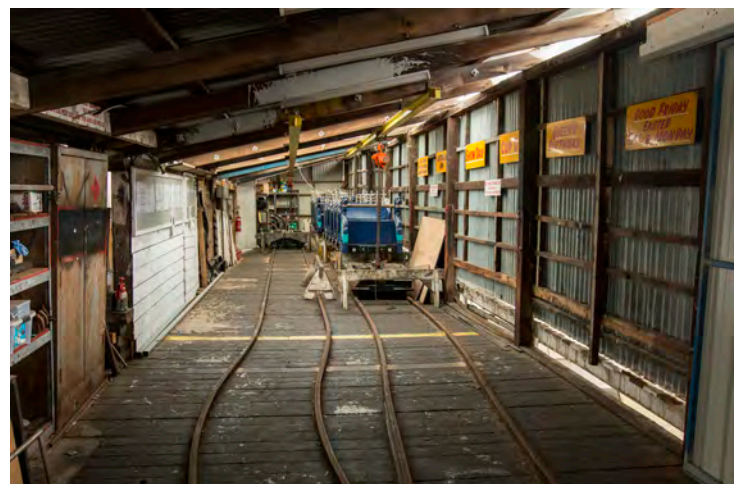
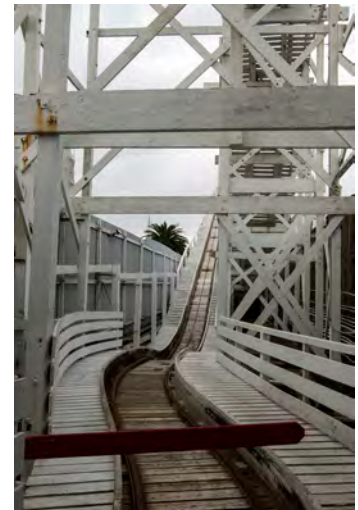
My last stop before the pub was Luna Park. Melbourne's iconic amusement park, has excited and delighted guests for over 100 years. In 1912, the JD Williams Amusement Company created a futuristic world of crazy possibilities and endless escapes, immediately embedding itself into the culture of bayside St Kilda. Today, Luna Park retains the charm of yesterday with rides and architecture from a century ago alongside contemporary thrill rides that still keep guests screaming for more. The famous Luna Park Face has changed many times over the course of ten decades. Originally it was made from chicken wire, hessian and cement render, and had illuminated eyes that rolled from side to side. The face underwent its most recent facial reconstruction in 1997.

Luna Park's Great Scenic Railway is 102 years old and is the oldest operating roller coaster of its kind in the world. The track was originally built from 65,674 metres of Oregon pine that was shipped from Canada in 1911. The carousel is 100 years old and has been perfectly restored to its original glory by a team of experts. A century ago it cost the equivalent of \$14,657 plus shipping and was put together like a giant puzzle with hundreds of numbered parts. The Ghost Train was purchased from the Pretzel Amusement Company (USA) in 1934 and became the symbol of the park after the Great Depression. It was originally called The Pretzel.

We took a behind the scenes tour of the 102-year-old Scenic Railway, a walkthrough of the Ghost Train and a look at the mechanics and artwork of the beautifully restored carousel.



The only power behind the Rollercoaster!



Although I clearly like to visit the more industrial locations, there is a wide range of buildings on offer. From the Myer Mural Hall to Circus Oz, there is something for everyone.

Be sure to make Open House Melbourne your destination next year!



BELLARINE CAMERA CLUB
July - December 2015 SYLLABUS

DATE	SUBJECT	IMAGES DUE for MONTHLY COMPETITION
------	---------	--

IMPORTANT

For the latest syllabus information, competition rules, and image naming conventions
 please refer to our website: bellarinecameraclub.org.au

July 2015	SET SUBJECT: - Open	Images Due 20 July for Aug Comp
July 6	<ul style="list-style-type: none"> • Martin Young – Depth of Field 	
July 20	<ul style="list-style-type: none"> • MONTHLY COMPETITION – Set Subject - Open Judge – Confirmed 	
July 27	<ul style="list-style-type: none"> • COMMITTEE MEETING 	
August 2015	SET SUBJECT: - Monochrome	Images Due Aug 17 for Sept Comp
Aug 3	<ul style="list-style-type: none"> • A.G.M • Workshop – tips and tricks for camera's – Nikon, Canon, Olympus Bring along your camera 	
Aug 8	<p>Interclub competition – Colac - Portraits EDI'S The Set Subject in EDI's is "Portrait". The definition we have come up with for this is simple and concise.</p> <p>"Image of person or persons that can range from head to full length study. Can include candid photographs or formal portraits"</p>	
Aug 17	<ul style="list-style-type: none"> • MONTHLY COMPETITION - Monochrome Judge – Confirmed 	
Aug 24	<ul style="list-style-type: none"> • COMMITTEE MEETING 	
September 2015	SET SUBJECT: - Architecture	Images Due 21 Sept for Oct Comp
Sept 7	<ul style="list-style-type: none"> • Guest speaker – Val Moss – Image assessments 	
Sept 21	<ul style="list-style-type: none"> • MONTHLY COMPETITION – Architecture • Judge - Confirmed 	
Sept 28	<ul style="list-style-type: none"> • COMMITTEE MEETING 	
October 2015	SET SUBJECT: - Open	Images Due 19 Oct for Nov Comp
Oct 5	<ul style="list-style-type: none"> • Guest Speaker – 	
Oct 19	<ul style="list-style-type: none"> • MONTHLY COMPETITION – Open Judge - Confirmed 	
Oct 26	<ul style="list-style-type: none"> • COMMITTEE MEETING 	
November 2015	SET SUBJECT :- Abstract Photography	
Nov 2	<ul style="list-style-type: none"> • Guest Speaker – Lynne Bryant - Antarctica 	
Nov 16	<ul style="list-style-type: none"> • MONTHLY COMPETITION – Abstract Photography Judge – Confirmed 	

HELP SUPPORT YOUR CLUB BY PURCHASING READY-MADE PHOTO MATS

Mats are available for sale at each meeting for a very reasonable price. All profits go back into the Club.

Colours are black, charcoal and off-white to suit the following print sizes:

5" x 7"	\$2.00 each
6" x 8"	\$2.50 each
8" x 10"	\$3.00 each
8" x 12"	\$4.00 each

Special sizes can be made to order
(up to the maximum mat size of 40 x 50cm)\

FOR ALL MATS SEE JOHN GALLICHAN, OUR 'MASTER MAT MAKER'

*NEW, MATS WITH HINGED FOAMCORE BACKING
Available in BLACK, CHARCOAL, OFF-WHITE*



TO SUIT FOLLOWING SIZES,

5" X 7"	\$4.00 EA
6" X 8"	\$4.50 EA
8" X 10"	\$6.50 EA
8" X 12"	\$7.00 EA
12" X 16"	\$10.00 EA

(12" X 16" Made to Order only)

DO YOU HAVE ANY PHOTOGRAPHIC EQUIPMENT OR ACCESSORIES FOR SALE?

If you would like to advertise your pre-loved photography equipment or accessories here, please submit a detailed article, preferably with a picture, via email to:

editor@bellarinecameraclub.org.au

